



Garelli

Funi e tiranti inox made in Italy

Dal 1957 produzione e vendita di tiranti e funi inox



SISTEMI DI FUNI E TIRANTI IN ACCIAIO INOX

**Accessori per balaustre, per Linee Vita, per pensiline,
per tensostrutture, per tendoni e vele, per facciate vetrate,
per tesate semaforiche, per reti filotramviarie, per pareti verdi.**

STAINLESS STEEL CABLES SYSTEMS and TENSION SYSTEMS with TIE BARS RODS

**Articles for structural architecture, for balustrades, for canopies,
for membrane tensile structures, for glass facades, for green facades.**



Tenditori inox, bronzo, titanio
Terminali
Funi inox
Isolatori
Capocorda
Grilli
Golfari
Anelli
Snodi
Redance
Morsetti
Talurit
Ganci a scocco
Perni a snodo
Molloni per ormeggio
Cavallotti
Tiranti

Strallature per tensostrutture
Tiranti per edilizia
Facciate vetrate continue
Architettura di interni
Arredo urbano
Morsetteria e tiranti per line ferrotranviarie
Ringhiere e recinzion
Tiranti in tondino pieno
Strallature per ponti

Sartiame completo a misura
Stralli
Paterazzi
Draglie
Volanti
Tendipaterazzi
Tesastralli Kandar
Refittings imbarcazioni a vela d'epoca

Macchine pressaterminali elettriche, modello "SM" per la pressatura di terminali e talurit su funi metalliche dal diam 2 mm fino al diam 25 mm, con matrici pronte all'uso.

Le officine meccaniche GARELLI producono e commercializzano dal 1957 tutta la completa gamma di accessori ed articoli in acciaio inossidabile per funi e catene, standard ed a disegno del cliente, ed inoltre anche una completa serie di presse per i terminali su funi inox.

The GARELLI manufactures and trades since 1957 all the stainless steel rigging hardware and fittings fore wire rope and chain, standard and custom built type, for sailboats and architectural frame, and also a complete range swaging machines to pres the terminals on the wire rope.



Turnbuckles AISI 316, bronze, titan
Terminals
Toggles
Shackles
Eye nuts
Eye bolt
U bolt
Thimbles
Wire clips
Hooks
Shock absorber

Stainless steel cables
Round bars
Termination system and fittings for architectural applications
Rigging for industry
Railway
Railings and shuipyards

Shrouds
Railings Stay
Backstay insulators
Backstay adjuster
Baby
Kandar turnbuckles

Roller Swaging Machines "SM" model to swage terminals and ferrules on the wire rope from dia 2 mm to dia 25 mm

CATALOGO 2019 // CATALOGUE 2019

La ditta Garelli è una impresa familiare che nasce nel 1957 col nome di Garelli Officine Meccaniche, per opera di Lanfranco Garelli, che con capacità e dedizione la guiderà fino al 2003.

Lo studio di nuovi ed innovativi prodotti e l'impiego di attrezzature sempre moderne ed aggiornate, ha consentito alla Garelli di progredire e di affermarsi con i propri prodotti, sia in Italia che all'estero.

Dal 2003 la ditta Garelli diventa Garelli sas ed i figli Paolo e Marco la dirigono a tutt'oggi con l'aiuto di Anna Parisani Garelli e di Susy Garelli.

Fino al 1996 la sede è stata quella storica di Via del Commercio, 71 a Genova – Nervi, ma dal 1997 si è trasferita con la sua sede operativa nei nuovi locali di Via alle Vecchie Fornaci, 8 a Genova

ALTA QUALITÀ

Garelli produce e realizza da sempre nei propri locali e grazie ad un elevato e diversificato numero di macchinari, tutta una completa gamma di accessori e di articoli tecnici, realizzati in serie secondo propri standard, e secondo norme UNI e DIN, ed a disegno del cliente, in acciaio inossidabile ed in titanio.

Nei suoi primi anni di attività Garelli produce quasi esclusivamente accessori ed articoli in acciaio inossidabile per la nautica da diporto e per il settore navale, con la specializzazione nella esecuzione di sartame per imbarcazioni a vela. Negli ultimi decenni, la produzione e la vendita di accessori e di funi inox si è ampliata per qualità e per varietà, con diversi articoli utilizzati in differenti altri settori come in edilizia, in industria, in architettura, nel settore delle tensostrutture, delle tende tecniche, delle facciate vetrate continue, delle linee vita, della aviazione, dell'arredo urbano, delle linee elettriche, delle pensiline, ecc. ...

La pluriennale esperienza maturata, e la notevole esperienza acquisita presentano la ditta Garelli come azienda leader in Italia ed in Europa, nella produzione di tiranti in acciaio inossidabile ed in titanio.

I mercati di riferimento sono soprattutto l'Europa ed il Mediterraneo, ma anche gli Stati Uniti e la Oceania.

MASSIMA SICUREZZA

Tutta la produzione è utilizzata in condizioni di fortissime sollecitazioni, che richiedono la massima affidabilità e garanzia di sicurezza. Grazie all'abbinamento di manodopera molto specializzata, di attrezzature all'avanguardia ed ai severi sistemi di controllo, gli accessori della GARELLI sono sempre prettamente dimensionati e certificati per il carico dichiarato.

TOTALE AFFIDABILITÀ

Tenditori, terminali e tiranti vengono utilizzati per la realizzazione di sartame, stralli e draglie di imbarcazioni a vela, sia da regata che d'epoca, per le loro traversate oceaniche in sicurezza. GARELLI non si limita alla produzione di serie, ma tutto il "know how" e le attrezzature aziendali sono a disposizione per eseguire particolari a disegno, pezzi speciali e spesso ricostruendo pezzi perfettamente simili agli originali, negli impegnativi lavori di "Refitting", per restituire antico splendore ad affascinanti velieri d'epoca come TeVega, Candida, Windingo... ed Adriatica di "Velisti per Caso".

HIGH QUALITY

Since 1957 the Garelli rigging hardware manufactures a complete range of stainless steel accessories for ropes and chains, in accordance with its own standards, "UNI" and "DIN" rules and custom build.

The multiyear experience and specialization acquired, have made GARELLI a leading company in Italy in the manufacture of stainless steel tension rods for the rigging of sailboats, even of large dimensions, and for prestige architectural structures (tension structures and bridges). GARELLI products are in fact used in different sectors: pleasure boating, commercial and military shipbuilding, construction, industrial production, tension structures, street furniture, interior architecture, etc.

MAXIMUM SAFETY

All products are employed under extreme conditions, which require maximum reliability and safety guarantee. Thanks to the combination of highly specialised labour, state of the art facilities and strict control systems, GARELLI accessories are always sized and certified for the declared weight.

TOTAL RELIABILITY

Turnbuckles, terminals and tension rods are used in the production of rigging stays for sailboats, both race and period types, for safe ocean crossing. GARELLI is not limited to serial production, but all of its "know-how" and equipment are available for the execution of special designs, special parts and often for the reproduction of original parts in the challenging work of "Refitting", to return fascinating period sailing ships to their old splendour (i.e. TeVega, Candida, Windingo... and Adriatica, the sailboat featured in the TV show "Velisti per Caso").



FUNI IN ACCIAIO INOSSIDABILE
STAINLESS STEEL WIRE ROPE



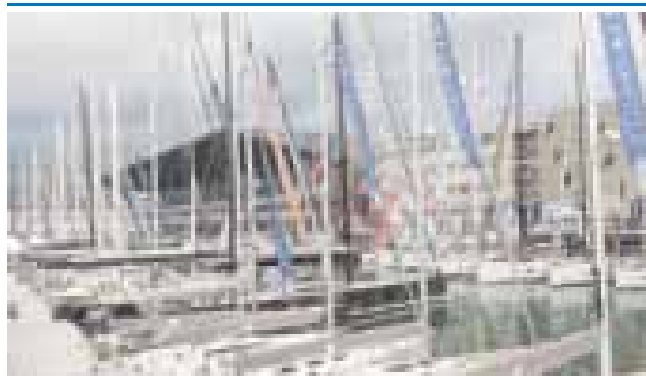
PRESSE e UTENSILI PER FUNI INOX
PRESSES AND TOOLS FOR WIRE ROPES



TIRANTI STRUTTURALI PER ARCHITETTURA
ARCHITECTURE STRUCTURAL CABLES



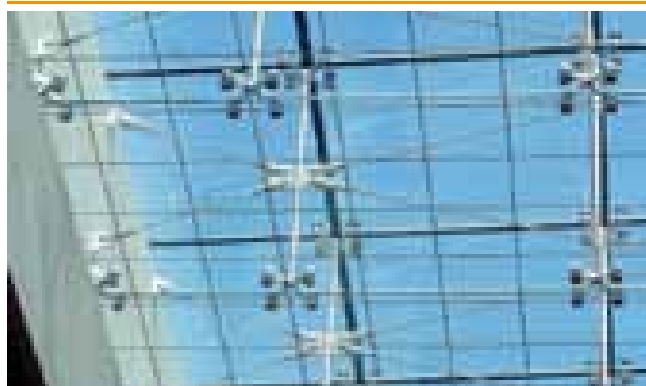
SARTIAME ED ACCESSORI NAUTICI NAVALI
STAINLESS STEEL MARINE FITTINGS



TIRANTI INOX PER "LINEA VITA"
STAINLESS STEEL FITTINGS FOR "SAFETY LINES"



TIRANTI IN TONDINO PIENO
TENSION SYSTEM WITH TIE BARS RODS



TIRANTI RIBASSATI PER BALAUSTRE ED ESPOSIZIONE
BALUSTRADES MINI FITTINGS



DADI E VITERIA IN ACCIAIO INOX
STAINLESS STEEL NUTS AND SCREWS





FUNI IN ACCIAIO INOSSIDABILE

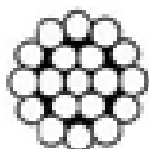
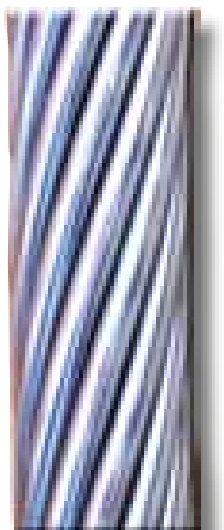
*STAINLESS STEEL
WIRE ROPE*



FUNE IN ACCIAIO INOX AISI 316 - STAINLESS STEEL AISI 316 WIRE ROPE

FUNE SPIROIDALE 1 X 19 FILI, AISI 316

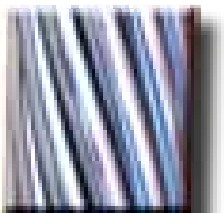
WIRE ROPE 1 X 19, AISI 316



RIF. ART.	FUNE WIRE	PESO kg / 100 mt WEIGHT kg / 100 mt	CARICO ROTTURA - BREAKIN G LOAD	
			KG	daN
9100	1,0	0,5	95	93
9101	1,5	1,1	198	196
9102	2	2,0	337	330
9103	3	4,5	757	742
9104	4	7,9	1.350	1.315
9105	5	12,4	2.100	2.060
9106	6	17,8	3.030	2.855
9107	7	24,3	3.850	3.778
9108	8	31,7	5.040	4.944
9110	10	49,5	7.870	7.720
9112	12	71,3	10.600	10.399
9114	14	97,1	13.400	13.145
9116	16	127,0	17.940	17.070
9119	19	176,0	23.751	21.190
9122	22	236,0	30.479	28.450
9126	25	330,0	42.405	39.830

FUNE SPIROIDALE 1 X 37 FILI, AISI 316

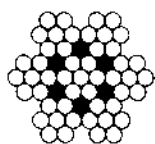
WIRE ROPE 1 X 37, AISI 316



RIF. ART.	FUNE WIRE	PESO kg / 100 mt WEIGHT kg / 100 mt	CARICO ROTTURA - BREAKIN G LOAD	
			KG	daN
9120-37	18	159	23.211	227,50
9121-37	20	204	29.826	292,40
9122-37	22	241	32.844	323,00
9123-37	24	289	39.474	387,00
9124-37	26	333	45.390	445,00

FUNE TIPO 7 X 7, AISI 316

WIRE ROPE 7 X 7, AISI 316



RIF. ART.	FUNE WIRE	PESO kg / 100 mt WEIGHT kg / 100 mt	CARICO ROTTURA - BREAKIN G LOAD	
			KG	daN
9126 - 1	1	0,38	57	56
9126 - 2	2	1,54	228	224
9127	3	3,46	513	503
9128	4	6,14	912	894
9129	5	9,6	1.430	1.400
9130	6	13,8	2.050	2.010
9132	8	24,6	3.650	3.580
9133	10	38,4	5.700	5.590

FUNE TIPO 7 X 19, AISI 316

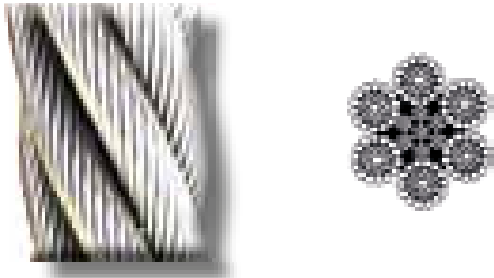
WIRE ROPE 7 X 19, AISI 316



RIF. ART.	FUNE WIRE	PESO kg / 100 mt WEIGHT kg / 100 mt	CARICO ROTTURA - BREAKIN G LOAD	
			KG	daN
9142	2	1,49	212	208
9143	3	3,35	478	496
9144	4	5,95	850	834
9145	5	9,3	1.330	1.300
9146	6	13,4	1.920	1.880
9147	7	18,2	2.600	2.550
9148	8	23,8	3.410	3.340
9150	10	37,2	5.310	5.210
9152	12	53,6	7.660	7.510
9154	14	72,9	10.100	10.210
9156	16	95,5	13.600	13.300

FUNE 6 x 36 + A.M., AISI 316

WIRE ROPE 6 x 36 + IWRC, AISI 316



RIF. ART.	FUNDE WIRE	PESO kg / 100 mt WEIGHT kg / 100 mt	CARICO ROTTURA - BREAKING LOAD	
			KG	daN
9168	8	26	3.641	3.570
9169	10	41	5.700	5.590
9170	12	59	8.210	8.805
9171	14	80	11.200	11.000
9172	16	105	14.600	14.300
9173	18	133	18.500	18.100
9174	20	164	22.800	22.400
9175	22	198	27.600	27.100
9176	24	236	32.800	32.200

FUNE "ANTI GIRO" 19 x 7, AISI 316

WIRE ROPE 19 X 7, AISI 316



RIF. ART.	FUNDE WIRE	PESO kg / 100 mt WEIGHT kg / 100 mt	CARICO ROTTURA - BREAKING LOAD	
			KG	daN
9243	5	10	1.320	1.290
9244	6	14,4	1.890	1.850
9246	8	25,7	3.370	3.300
9248	10	40,1	5.250	5.150

FUNE RIVESTITA PVC BIANCO 7 X 7, AISI 316

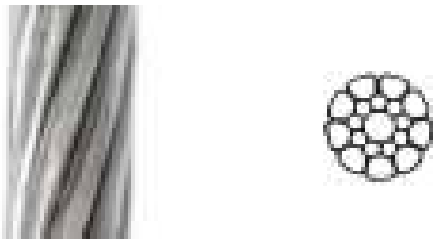
WIRE ROPE 7 X 7, AISI 316, WHITE PVC COVERED.



RIF. ART.	FUNDE WIRE	PESO kg / 100 mt WEIGHT kg / 100 mt	CARICO ROTTURA - BREAKING LOAD	
			KG	daN
9162	3 X 5	5,5	513	503
9163	3 X 6	6,1	513	503
9164	4 X 7	10,8	912	894
9165	4 X 8	12	912	894
9166	6 X 9	21,5	2.050	2010

FUNE SPIROIDALE COMPATTATA, AISI 316

COMPACTED STRAND, AISI 316, WIREROPE.



RIF. ART.	FUNDE WIRE	PESO kg / 100 mt WEIGHT kg / 100 mt	CARICO ROTTURA - BREAKING LOAD	
			KG	daN
9189	3	4,9	1.000	981
9190	4	9,1	1.780	1.746
9193	5	14,2	2.600	2.550
9194	6	20,5	3.600	3.530
9195	7	27,9	5.000	4.900
9196	8	36,5	6.300	6.175
9197	10	57	10.000	9.800

FUNE PARAFIL

PARAFIL ROPE



RIF. ART.	FUNDE WIRE	PESO kg / 100 mt WEIGHT kg / 100 mt	CARICO ROTTURA - BREAKING LOAD	
			KG	daN
9207	7	4,10	500	490
9209	8,5	5,90	1.000	980
9211	11	9,80	2.000	1.960

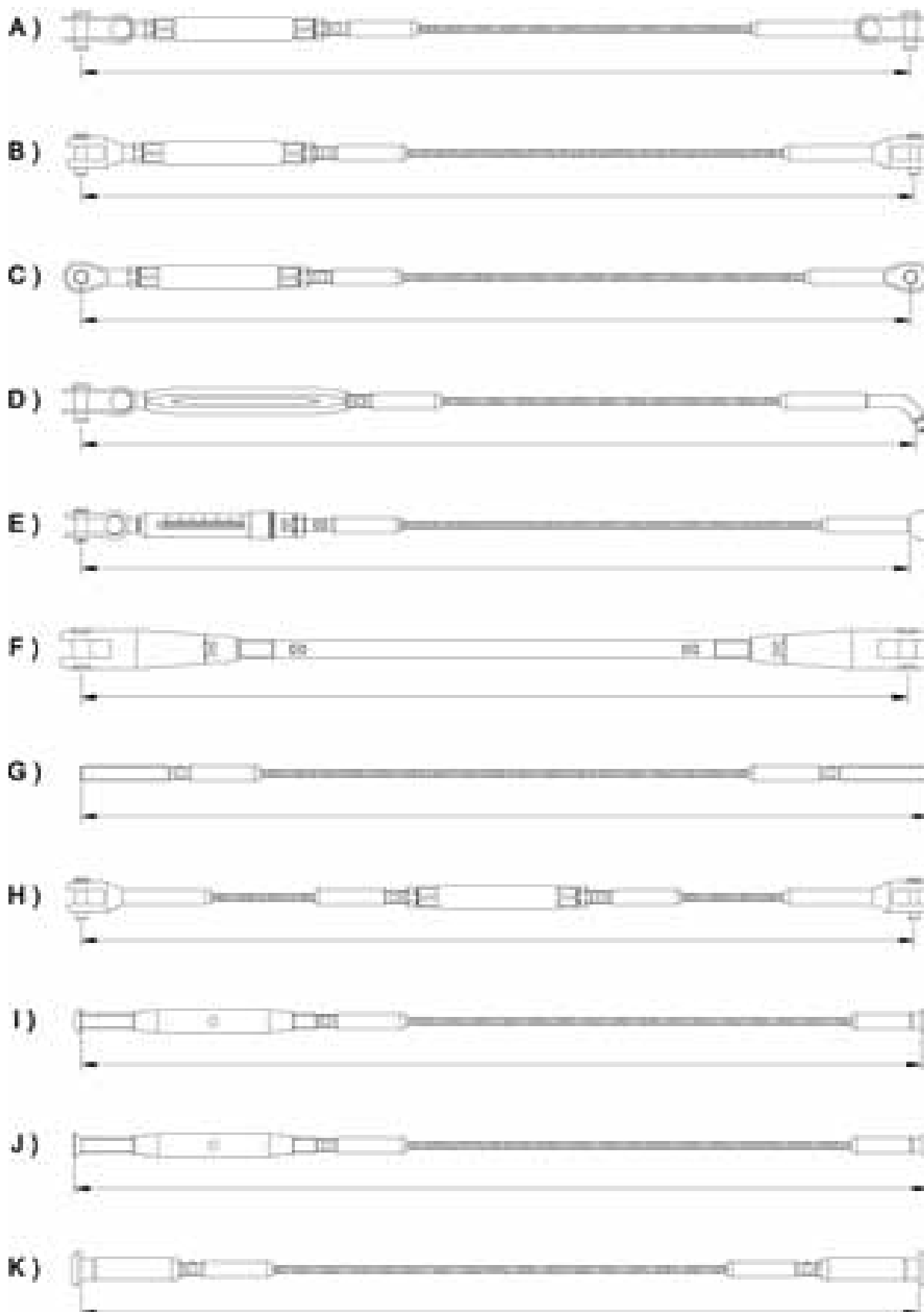
FUNE KEVLAR, BIANCO O NERO

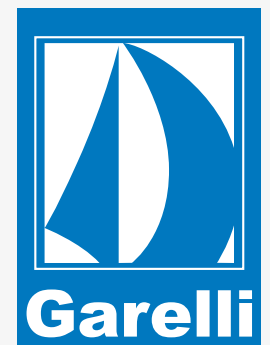
KEVLAR ROPE, WHITE OR BLACK



RIF. ART.	FUNDE WIRE	PESO kg / 100 mt WEIGHT kg / 100 mt	CARICO ROTTURA - BREAKING LOAD	
			KG	daN
9285	7,5	4,50	5	3.000
9286	9	6,50	6	4.500
9287	10	7,90	7	6.000
9288	11	9,80	8	8.000
9289	12,5	11,90	10	10.500

TIPOLOGIE PIÚ COMUNI DI TIRANTI INOX MOST POPULAR TYPES OF WIRE ROPE SYSTEMS





PRESSE E UTENSILI PER FUNI INOX

*PRESSES
AND TOOLS FOR WIRE ROPES*



Le unità pressa terminali su cavo, serie SM, sono macchine a funzionamento elettromeccanico, di peso e dimensione contenuta, che permettono il fissaggio dei terminali e dei talurit sulle funi metalliche.

Tale operazione consiste in una vera e propria laminazione a freddo, con una riduzione del terminale pressato fino al 40% della sezione iniziale.

Questo tipo di operazione di fissaggio assicura certezza del risultato, costante ripetitività, precisione delle misure, finitura esteticamente gradevole, velocità operativa e bassi costi.

L'operazione di fissaggio consiste nel far scorrere il terminale, dentro cui è alloggiato in idonea posizione il cavo, nelle apposite scanalature delle matrici di pressaggio, che, con un lento movimento rotatorio, accompagnano per tutta la sua lunghezza il terminale, pressandolo e amalgamandolo al cavo interno.

Tale tipo di operazione viene eseguita con la massima semplicità e rapidità (il tempo macchina medio è di 30 secondi per pressatura) e presenta delle caratteristiche di resistenza eccezionali e sempre superiori al carico di rottura del cavo stesso; infatti, sottoposto a prova di sollecitazione progressiva, si ha sempre lo strappo del cavo, e mai lo sfilamento del terminale.

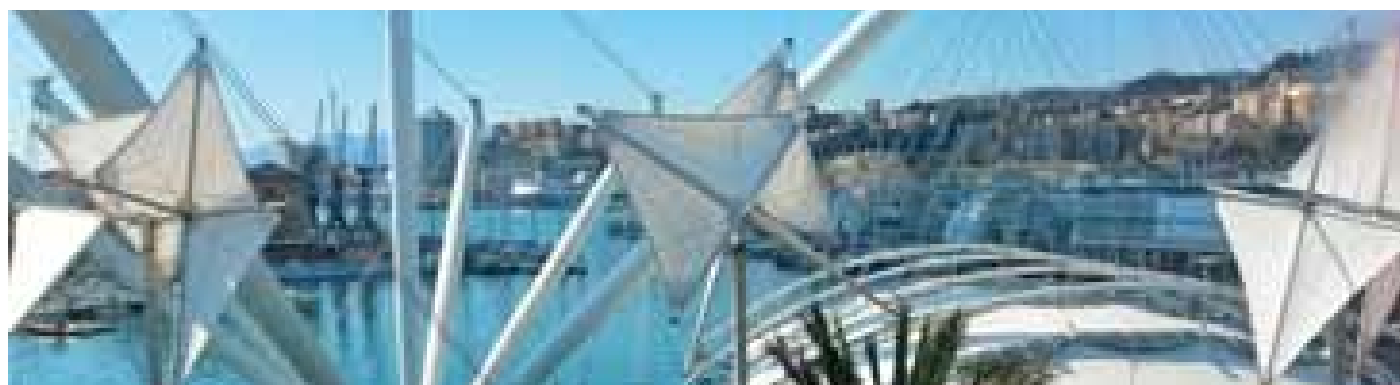
Differenti tipi di presse con diverse potenze applicate sono disponibili in funzione di diametri di cavo utilizzati. Unità pressaterminali SM sono regolarmente usate dalla Marina Militare Italiana, dalla Fincantieri, dalla Nato e dai più importanti cantieri navali e dai produttori e commercianti di cavi in Italia e nel mondo.



The swaging machine (SM series) are Electro-mechanical machines, which have contained size and weight. They have been realized to enable them to fixed terminals and talurit on metal wire rope. This is well and truly a cold-rolled operation, with reduction up to 40% of initial section of the pressed terminal. This type of fixing procedure ensures a positive results, constant repetition, size precision, an aesthetically pleasing finish, operational speed and low cost. The fixing procedure is carried out by sliding the terminal, which has a suitably placed cable inside, along the appropriate pressing dies grooves. This is done by a slow rotating movement, pressing it and amalgamating it whit the inside wirerope. This operation is carried out very simply and quickly, indeed the average working time is about 30 seconds for each swaged. This kind of swaged has exceptionals resistance's characteristics, ever higher of the wire's breaking load.

Indeed, when carrying out the progressive stress test, the tear has always been on the cable itself without causing the terminal to unstrung.

Different types of pressing machines, with different power applied to them are available according to the cable used. Swage machine SM units are regularly used by the Italian Military Navy, Fincantieri, Nato, and by the most important shipyards and by cable manufacturers and traders in Italy and around the world.



SMH-1



CE

Terminali per funi strutturali <i>Terminals for heavy cables</i>	da Ø 3 mm a Ø 8 mm
Manicotti Talurit per funi <i>Ferrules Talurit for cables</i>	da Ø 3 mm a Ø 4 mm
Funzionamento pressa <i>Press Power</i>	Manuale oleodinamico <i>Hydraulic handle press</i>
Dimensioni <i>Dimensions</i>	mm 500 x 200 x h 200
Peso <i>Weight</i>	kg 20



DIAMETRI ESTERNI PRESSABILI DEI TERMINALI // OUTSIDE DIAMETER OF TERMINAL BEFORE SWAGING

Ø fune <i>Wire dia.</i>	3	4	5	6	8
Ø gambo <i>Ext. dia.</i>	6,3	7,5	9	12,5	12,5

SM1-US



CE

Terminali per funi strutturali <i>Terminals for heavy cables</i>	da Ø 3 mm a Ø 10 mm
Manicotti Talurit per funi <i>Ferrules Talurit for cables</i>	da Ø 3 mm a Ø 8 mm
Funzionamento pressa <i>Press Power</i>	220 Volt - 50 Hz or on demand
Dimensioni <i>Dimensions</i>	mm 440 x 250 x h 500
Peso <i>Weight</i>	kg 65



DIAMETRI ESTERNI PRESSABILI DEI TERMINALI // OUTSIDE DIAMETER OF TERMINAL BEFORE SWAGING

Ø fune <i>Wire dia.</i>	2 - 2,5	3	4	5	5,5	6	7	8	10			
Ø gambo <i>Ext. dia.</i>	5,5	6	6,3	7,5	8	9	10,8	12	12,5	14,1	16	17,8

SM2-US



CE

Terminali per funi strutturali <i>Terminals for heavy cables</i>	da Ø 3 mm a Ø 12 mm
Manicotti Talurit per funi <i>Ferrules Talurit for cables</i>	da Ø 3 mm a Ø 8 mm
Funzionamento pressa <i>Press Power</i>	220 Volt - 50 Hz or on demand
Dimensioni <i>Dimensions</i>	mm 600 x 300 x h 670
Peso <i>Weight</i>	kg 120



DIAMETRI ESTERNI PRESSABILI DEI TERMINALI // OUTSIDE DIAMETER OF TERMINAL BEFORE SWAGING

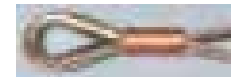
Ø fune <i>Wire dia.</i>	3	4	5	6	7	8	10	12						
Ø gambo <i>Ext. dia.</i>	6	6,3	7,5	8	9	10,8	12	12,5	14,1	16	17,8	20	20	21,4

SM3-US



CE

Terminali per funi strutturali <i>Terminals for heavy cables</i>	a Ø 3 mm a Ø 16 mm
Manicotti Talurit per funi <i>Ferrules Talurit for cables</i>	da Ø 3 mm a Ø 10 mm
Funzionamento pressa <i>Press Power</i>	380 Volt - 50 Hz or on demand
Dimensioni <i>Dimensions</i>	mm 600 x 300 x h 790
Peso <i>Weight</i>	kg 160



DIAMETRI ESTERNI PRESSABILI DEI TERMINALI // OUTSIDE DIAMETER OF TERMINAL BEFORE SWAGING

Ø fune <i>Wire dia.</i>	2/3	4	5	6	7	8	10	12	14	16						
Ø gambo <i>Ext. dia.</i>	6	6,3	7,5	8	9	10,8	12	12,5	14,1	16	17,8	20	20	21,4	25	28

SM4-US



CE

Terminali per funi strutturali <i>Terminals for heavy cables</i>	da Ø 3 mm a Ø 25 mm
Manicotti Talurit per funi <i>Ferrules Talurit for cables</i>	da Ø 3 mm a Ø 14 mm
Funzionamento pressa <i>Press Power</i>	380 Volt - 50 Hz or on demand
Dimensioni <i>Dimensions</i>	mm 1250 x 780 x h 1250
Peso <i>Weight</i>	kg 290



DIAMETRI ESTERNI PRESSABILI DEI TERMINALI // OUTSIDE DIAMETER OF TERMINAL BEFORE SWAGING

Ø fune <i>Wire dia.</i>	2/3	4	5	6	7	8	10	12	14	16	19	22	25						
Ø gambo <i>Ext. dia.</i>	6	6,3	7,5	8	9	10	12	12,5	14	14	17,8	20	20	21,4	25	28	35,5	38,5	42

GUIDA PER LA CORRETTA PRESSATURA DIRITTA DEI TERMINALI // GUIDE FOR A CORRECT RIGHT SWAGED



CE

Tipo di impiego <i>Kind of use</i>	Opzionale Optional
Modalità di assemblaggio <i>Way of assembly</i>	anche dopo l'acquisto also after the purchase

SM1-GUI	
Dimensioni // Dimensions	mm 400 x 300 x h 200
Peso // Weight	kg 5

SM2-GUI	
Dimensioni // Dimensions	mm 500 x 400 x h 230
Peso // Weight	kg 7

SM3-GUI	
Dimensioni // Dimensions	mm 600 x 500 x h 250
Peso // Weight	kg 9

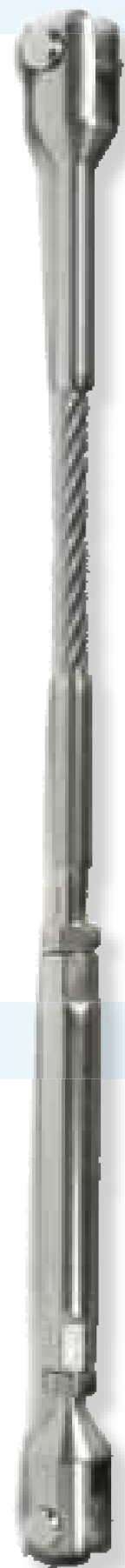


TABELLA DEI DIAMETRI DI PRESSATURA TERMINALI
TABLE OF TERMINAL'S SWAIGE DIMENSIONS

diam. Fune wire dia.		diam. terminale prima di pressatura terminal's dia. before swaging		Campo di azione SM SM range
mm	inch	mm	inch	model
2,5	3/32	5,5	0,216	SM1
3	1/8	6,0	//	SM1 - SM2 - SM3 - SM4
3	1/8	6,3	0,248	SM1 - SM2 - SM3 - SM4
4	5/32	7,5	0,295	SM1 - SM2 - SM3 - SM4
4	5/32	8,0	//	SM1 - SM2 - SM3 - SM4
5	3/16	9,0	0,355	SM1 - SM2 - SM3 - SM4
5,5	7/32	10,8	0,425	SM1 - SM2 - SM3 - SM4
6	1/4	12,0	//	SM1 - SM2 - SM3 - SM4
6	1/4	12,5	0,492	SM1 - SM2 - SM3 - SM4
7	9/32	14,1	0,556	SM1 - SM2 - SM3 - SM4
8	5/16	16,0	0,630	SM1 - SM2 - SM3 - SM4
10	3/8	17,8	0,704	SM1 - SM2 - SM3 - SM4
10	3/8	18,0	//	SM1 - SM2 - SM3 - SM4
11	7/16	19,8	0,781	SM2 - SM3 - SM4
12	1/2	20,0	//	SM2 - SM3 - SM4
12	1/2	21,4	0,842	SM2 - SM3 - SM4
14	9/16	25,0	0,984	SM3 - SM4
16	5/8	28,0	1,104	SM3 - SM4
19	3/4	35,5 / 34,5	1,398 / 1,358	SM4
22	7/8	38,5 / 40,4	1,409 / 1,590	SM4
25	1	42,5 / 46,0	1,673 / 1,812	SM4
TOLLERANZE - TOLLERANCES				
		+/- 0,10 mm	+/- 0,004 inch	

TABELLA PER LA PRESSATURA DEI MANICOTTI TALURIT
TABLE OF NICOPRESS SWAGE DIMENSIONS

diam. Fune wire dia.		Grandezza del manicotto Nicopress size	Campo di azione SM SM range
mm	inch	grd	model
2,5	3/32	2,5	SM1
3	1/8	3	SM1 - SM2 - SM3 - SM4
4	5/32	4	SM1 - SM2 - SM3 - SM4
5	3/16	5	SM1 - SM2 - SM3 - SM4
6	1/4	6	SM1 - SM2 - SM3 - SM4
7	9/32	7	SM1 - SM2 - SM3 - SM4
8	5/16	8	SM1 - SM2 - SM3 - SM4
10	3/8	10	SM2 - SM3 - SM4
12	1/2	12	SM3 - SM4
14	9/16	14	SM4
16	5/8	16	SM4



UTENSILI OLEODINAMICI PER LA CRIMPATURA DELLE FUNI HYDRAULIC TOOLS TO CRIMPING STEEL CABLES

PFMH-1



Terminali per funi strutturali <i>Terminals for heavy cables</i>	a Ø 3 mm a Ø 5 mm
Terminali per funi x ringhiere <i>Terminals for balustrades</i>	da Ø 3 mm a Ø 8 mm
Manicotti Talurit per funi <i>Ferrules Talurit for cables</i>	Ø 2,5 - 3 - 4 mm
Funzionamento pressa <i>Press Power</i>	Manuale oleodinamico Hydraulic handle press
Dimensioni <i>Dimensions</i>	mm 390 x 120 x h 50
Peso <i>Weight</i>	kg 2,7

DIAMETRI ESTERNI PRESSABILI DEI TERMINALI // OUTSIDE DIAMETER OF TERMINAL BEFORE SWAGING

Ø fune <i>Wire dia.</i>	2	4	5	6	8
Ø gambo <i>Ext. dia.</i>	6	6,3	7,5	8	8
			6,3	10	7,5
				9,0	12

PFMH-1EC



Terminali per funi strutturali <i>Terminals for heavy cables</i>	a Ø 3 mm a Ø 4 mm
Terminali per funi x ringhiere <i>Terminals for balustrades</i>	da Ø 3 mm a Ø 8 mm
Manicotti Talurit per funi <i>Ferrules Talurit for cables</i>	Ø 2,5
Funzionamento pressa <i>Press Power</i>	Manuale oleodinamico Hydraulic handle press
Dimensioni <i>Dimensions</i>	mm 390 x 120 x h 50
Peso <i>Weight</i>	kg 2,7

DIAMETRI ESTERNI PRESSABILI DEI TERMINALI // OUTSIDE DIAMETER OF TERMINAL BEFORE SWAGING

Ø fune <i>Wire dia.</i>	2	4	5	6	8
Ø gambo <i>Ext. dia.</i>	6	6,3	7,5	8	8
			6,3	10	7,5
				9,0	12,5

PFMH-2



Terminali per funi strutturali <i>Terminals for heavy cables</i>	a Ø 3 mm a Ø 5 mm
Terminali per funi x ringhiere <i>Terminals for balustrades</i>	da Ø 3 mm a Ø 8 mm
Manicotti Talurit per funi <i>Ferrules Talurit for cables</i>	da Ø 3 mm a Ø 8 mm
Funzionamento pressa <i>Press Power</i>	Manuale oleodinamico Hydraulic handle press
Dimensioni <i>Dimensions</i>	mm 550 x 180 x h 70
Peso <i>Weight</i>	kg 5,5

DIAMETRI ESTERNI PRESSABILI DEI TERMINALI // OUTSIDE DIAMETER OF TERMINAL BEFORE SWAGING

Ø fune <i>Wire dia.</i>	2	4	5	6	8
Ø gambo <i>Ext. dia.</i>	6	6,3	7,5	8	8
			6,3	10	7,5
				9,0	12,5

PFMH-5EC



Terminali per funi strutturali <i>Terminals for heavy cables</i>	a Ø 3 mm a Ø 8 mm
Terminali per funi x ringhiere <i>Terminals for balustrades</i>	da Ø 3 mm a Ø 10 mm
Manicotti Talurit per funi <i>Ferrules Talurit for cables</i>	da Ø 3 mm a Ø 8 mm
Funzionamento pressa <i>Press Power</i>	Manuale oleodinamico Hydraulic handle press
Dimensioni <i>Dimensions</i>	mm 200 x 200 x h 320
Peso <i>Weight</i>	kg 20



DIAMETRI ESTERNI PRESSABILI DEI TERMINALI // OUTSIDE DIAMETER OF TERMINAL BEFORE SWAGING

Ø fune Wire dia.	2 - 2,5	2,5 - 3	3 - 4	4 - 5	5 - 6	8	10
Ø gambo Ext. dia.	4,8	5,5	6,3	7,5	9	12	12,5
						14,1	

PINZA CRIMPA TALURIT MANUALE HANDLE CRIMPING TOOL

PFM-1



Manicotti Talurit per funi <i>Ferrules Talurit for cables</i>	da Ø 2 - 2,5 - 3 - 4 - 5 mm
Dimensioni <i>Dimensions</i>	mm 500 x 150 x h 40
Peso <i>Weight</i>	kg 1,5

PFM-A



Manicotti Talurit per funi <i>Ferrules Talurit for cables</i>	Ø 1 - 1,2 - 1,5 - 2 - 2,2 mm
Dimensioni <i>Dimensions</i>	mm 320 x 150 x h 20
Peso <i>Weight</i>	kg 0,5

PINZA TAGLIA FUNI MANUALE HANDLE CUTTING CABLE TOOL

TFM-1EC



Pinza taglia per funi <i>Handle cutting for cables</i>	max Ø 4 7x19 max Ø 3 1x19
Dimensioni <i>Dimensions</i>	mm 200 x 70 x h 10
Peso <i>Weight</i>	kg 0,3

TFM-2



Pinza taglia per funi <i>Handle cutting for cables</i>	max Ø 6 7x19 max Ø 4 1x19
Dimensioni <i>Dimensions</i>	mm 325 x 120 x h 20
Peso <i>Weight</i>	kg 0,3

TFM-3



Pinza taglia per funi <i>Handle cutting for cables</i>	max Ø 8 7x19 max Ø 5 1x19
Dimensioni <i>Dimensions</i>	mm 500 x 140 x h 30
Peso <i>Weight</i>	kg 0,4

TFM-4



Pinza taglia per funi <i>Handle cutting for cables</i>	max Ø 10 7x19 max Ø 6 1x19
Dimensioni <i>Dimensions</i>	mm 630 x 180 x h 30
Peso <i>Weight</i>	kg 0,5

TRANCIA FUNI METALLICHE - IDRAULICA HYDRAULIC WIRE CUTTING TOOL

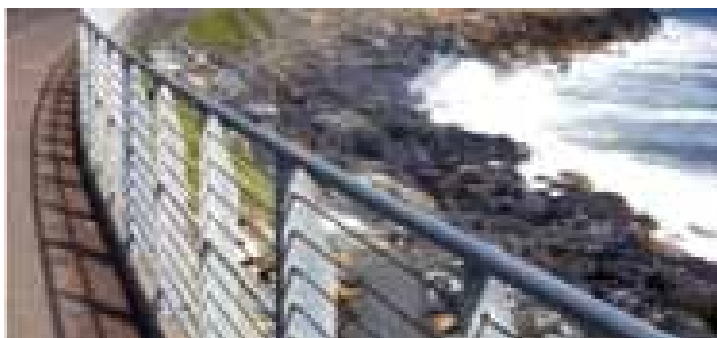
TFM-H



Pinza taglia per funi <i>Handle cutting for cables</i>	max Ø12 7x19 max Ø10 1x19
--	------------------------------

Dimensioni <i>Dimensions</i>	mm 200 x 70 x h 10
--	--------------------

Peso <i>Weight</i>	kg 0,3
------------------------------	--------





ACCESSORI NAUTICI E STRUTTURALI

SARTIAME E STRALLATURE

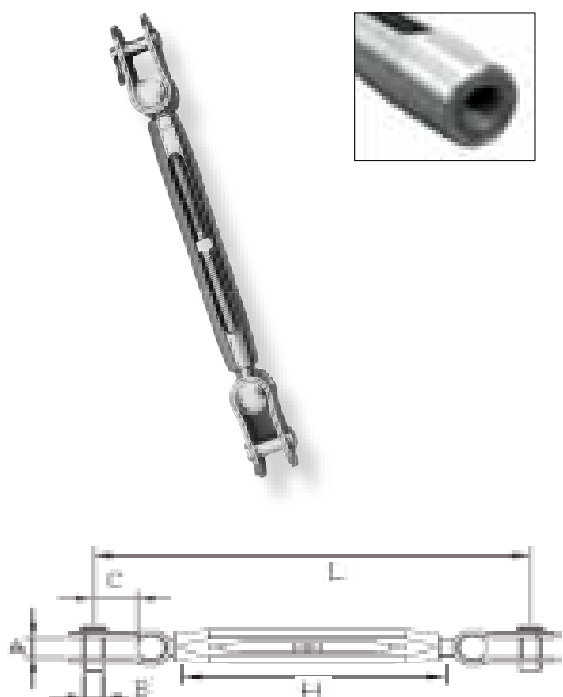
*MARINE
AND STRUCTURAL FITTINGS*

RIGGING HARDWARE



Tenditore a due forcelle snodate, canaula aperta passo fine A4 con boccole BRONZO antigrippaggio

Turnbuckle 2 toggles, AISI 316 opened body with inserted fine thread on BRONZE antiseizing



ART. REF	Ø fune Ø wire	FLT thread	A widht	B pin	C depth	H body	L opened	L1 closed	Car. Rot. MBL Kg
1192-0508	5	MB10	10	8	18	127	285	205	3.650
1192-0610	6	MB12	12	10	20	148	330	240	5.280
1192-0712	7	MB12	16	12	20	148	355	265	5.280
1192-0812	8	MB12	16	12	24	148	380	290	5.280
1193-0712	7	MB14	16	12	20	165	365	260	7.500
1193-0814	8	MB14	17	14	24	165	385	280	7.500
1194-0814	8	MB16	17	14	24	190	435	310	9.800
1194-1016	10	MB16	18	16	32	190	475	350	9.800
1195-1016	10	MB18	18	16	32	215	480	355	11.950
1196-1216	12	MB20	19	16	32	245	580	410	15.480
1196-1218	12	MB20	19	18	35	245	590	420	15.480
1197-1421	14	MB22	23	21	38	275	760	570	18.900
1198-1624	16	MB24	27	24	44	315	860	640	22.800
1199-1828	18	MB27	31	28	50	345	980	750	28.000
1200-1930	19	MB30	33	30	50	385	1.030	780	34.500

Dimensioni in millimetri.
Dimensions are on millimeters.

Dimensioni più grandi o speciali si possono eseguire a richiesta.
Bigger or customized dimensions can be manufactured on demand.

Tenditore a forcella snodata, canaula aperta passo fine A4 con boccole BRONZO antigrippaggio

Turnbuckle toggle/swage stud, AISI 316 opened body with inserted fine thread on BRONZE antiseizing



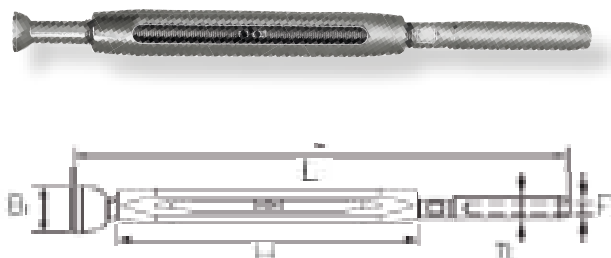
ART. REF	Ø fune Ø wire	FLT thread	A widht	B pin	C depth	D dia. ext	L opened	L1 closed	Car. Rot. MBL Kg
1074-1306	5	MB10	10	8	14	9,0	310	230	3.650
1075-1206	6	MB12	12	10	18	12,0	355	265	5.280
1075-1306	6	MB12	12	10	18	12,5	355	265	5.280
1076-1407	7	MB12	16	12	20	14,1	380	290	5.280
1076-1608	8	MB12	16	12	24	16,0	405	315	5.280
1177-1407	7	MB14	16	12	20	14,1	410	305	7.500
1178-1608	8	MB14	17	14	24	16,0	435	325	7.500
1179-1612	8	MB16	17	14	24	16,0	475	350	9.800
1180-1814	10	MB16	18	16	32	17,9	520	395	9.800
1181-1816	10	MB18	18	16	32	17,9	545	410	11.950
1182-2016	12	M20	19	16	32	20,0	650	480	15.480
1182-2018	12	M20	19	16	32	21,4	650	480	15.480
1182-2116	12	M20	19	18	35	20,0	660	490	15.480
1182-2118	12	M20	19	18	35	21,4	660	490	15.480
1184-2521	14	M22	23	21	38	25,0	790	600	18.900
1186-2824	16	M24	27	24	44	28,0	895	675	22.800
1186-3124	16	M24	27	24	44	31,4	895	675	22.800
1187-3528	19	M27	31	28	50	35,5	990	760	28.500
1188-3530	19	M30	33	30	50	35,5	1.055	805	34.500

Dimensioni in millimetri.
Dimensions are on millimeters.

Dimensioni più grandi o speciali si possono eseguire a richiesta.
Bigger or customized dimensions can be manufactured on demand.

Tenditore semisfera / pressare, canaula aperta passo fine A4 con boccole BRONZO antigrippingaggio

Turnbuckle stemball / stud, AISI 316 opened body with inserted fine thread on BRONZE antiseizing

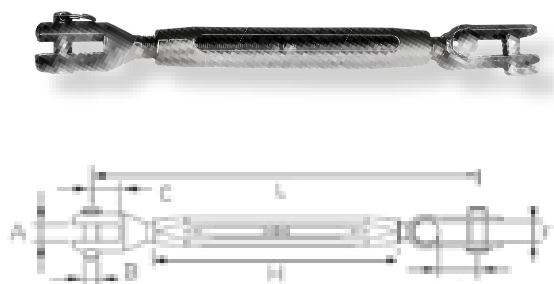


ART. REF	Ø fune Ø wire	filettatura thread	B head	D dia. ext	H body
1460-0509	5	MB10	16	9,0	127
1462-0613	6	MB12	19	12,5	148
1462-0714	7	MB12	22	14,1	148
1464-0714	7	MB14	22	14,1	165
1464-0816	8	MB14	25	16,0	165
1466-0816	8	MB16	25	16,0	190
1466-1018	10	MB16	28	17,8	190
1468-1918	10	MB18	28	17,8	215
1470-1220	12	MB20	31	20,0	245
1470-1221	12	MB20	31	21,4	245

Dimensioni in millimetri. Dimensions on millimeters.
 Dimensioni più grandi o speciali a richiesta. Bigger or customized dimensions on demand.
 Le dimensioni possono essere variate senza alcun preavviso. Dimensions can be changed without any prior notice.

Tenditore forcella fres./ forc snod., canaula aperta passo fine A4 c/boccole BRONZO antigrippingaggio

Turnbuckle fork / toggle, AISI 316 opened body with inserted fine thread on BRONZE antiseizing

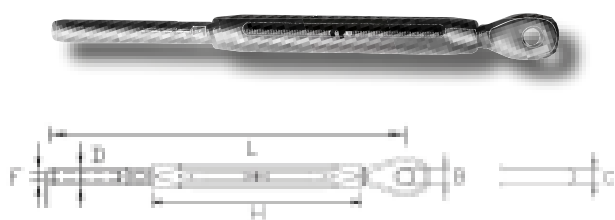


ART. REF	Ø fune Ø wire	FLT thread	A width	B pin	C depth	F width	L opened	L1 closed
1046-0806	6	MB12	10	10	18	12,0	265	195
1046-1207	7	MB12	12	12	20	16,5	300	220
1047-1207	7	MB14	12	12	20	16,5	360	255
1047-1208	8	MB14	12	12	24	17,0	380	275
1048-1408	8	MB16	14	14	24	17,0	410	285
1048-1410	10	MB16	14	14	32	18,0	455	330
1049-1610	10	MB18	16	16	32	18,0	470	335
1050-1612	12	MB20	16	16	32	19,0	560	390
1050-1812	12	MB20	18	18	35	19,0	570	400
1051-2114	14	MB22	18	21	38	23,0	695	505
1052-2416	16	MB24	20	24	44	27,0	790	570

Dimensioni in millimetri. Dimensions on millimeters.
 Dimensioni più grandi o speciali a richiesta. Bigger or customized dimensions on demand.
 Le dimensioni possono essere variate senza alcun preavviso. Dimensions can be changed without any prior notice.

Tenditore occhio / pressare, canaula aperta passo fine A4 con boccole BRONZO antigrippingaggio

Turnbuckle eye / stud, AISI 316 opened body with inserted fine thread on BRONZE antiseizing

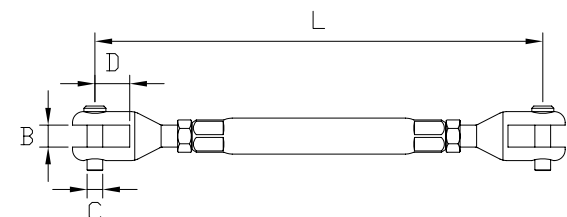


ART. REF	Ø fune Ø wire	FLT thread	B hole	C thick	D dia.ext	H body	L opened	L1 closed
	5	MB10	8,5	7,5	9,0	127	280	210
	6	MB12	10,5	9	12,5	148	330	250
	7	MB12	12,5	11	14,1	148	345	265
	7	MB14	12,5	11	14,1	165	390	290
	8	MB14	12,5	11,5	16,0	165	410	310
	8	MB16	12,5	11,5	16,0	190	445	320
	8	MB16	14,5	11,5	16,0	190	445	320
	10	MB16	14,5	13	17,8	190	485	360
	10	MB18	16,5	13	17,8	215	510	375
	12	MB20	16,5	15,5	20,0	245	575	440
	12	MB20	18,5	15,5	21,4	245	575	440

Dimensioni in millimetri. Dimensions on millimeters.
 Dimensioni più grandi o speciali a richiesta. Bigger or customized dimensions on demand.
 Le dimensioni possono essere variate senza alcun preavviso. Dimensions can be changed without any prior notice.

Tenditore canaula chiusa a due forcelle fresate, AISI 316, tipo STRUTTURALE

Turnbuckle with 2 forks, with closed body, AISI 316, Structural type



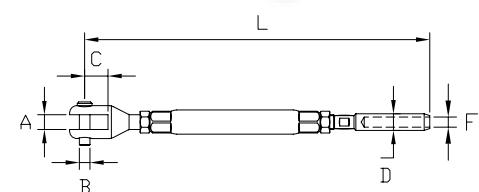
ART. REF	Ø fune Ø wire	FLT thread	A width	B pin	C depth	H body	L opened	L1 closed	Car. Rot. MBL Kg
1001-0402	2,5	M5	5	4	8	60	140	100	770
1002-0503	3	M6	6	5	10	71	170	120	1.100
1003-0604	4	M8	8	6	12	92	210	150	2.150
1004-0805	5	M10	8	8	14	105	240	170	3.480
1005-1006	6	M12	10	10	18	126	285	200	5.050
1005-1207	7	M12	12	12	22	126	305	220	5.050
1006-1207	7	M14	12	12	22	145	340	245	6.900
1006-1208	8	M14	12	12	24	145	355	260	6.900
1007-1208	8	M16	12	12	24	165	390	280	9.300
1007-1408	8	M16	14	14	24	165	390	280	9.300
1007-1410	10	M16	14	14	30	165	420	310	9.300
1008-1610	10	M18	16	16	30	190	455	325	11.400
1009-1612	12	M20	16	16	32	215	500	350	13.900
1009-1812	12	M20	18	18	35	215	520	370	14.500
1010-2114	14	M22	18	21	38	250	625	450	17.900
1011-2416	16	M24	20	24	44	290	700	490	20.900
1012-2818	18	M27	22	28	50	320	800	570	27.000
1013-3019	19	M30	22	30	50	350	850	600	32.900

Dimensioni in millimetri.
Dimensions are on millimeters.

Dimensioni più grandi o speciali si possono eseguire a richiesta.
Bigger or customized dimensions can be manufactured on demand.

Tenditore canaula chiusa forcilla fresata / asta a pressare, AISI 316

Turnbuckle fork / swage stud, closed body, AISI 316



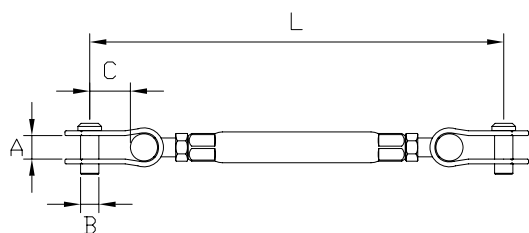
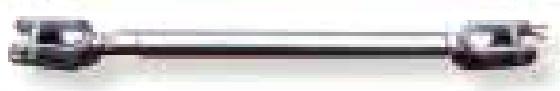
ART. REF	Ø fune Ø wire	FLT thread	A width	B pin	C depth	D dia. ext	L opened	L1 closed	Car. Rot. MBL Kg
1023-0504	2,5	M5	5	4	8	5,5	160	120	770
1023-0604	2,5	M5	5	4	8	6,0	160	120	770
1024-0605	3	M6	6	5	10	6,0	190	140	1.100
1024-0705	3	M6	6	5	10	6,3	190	140	1.100
1025-0706	4	M8	8	6	12	7,5	240	180	2.150
1026-0908	5	M10	8	8	14	9,0	275	205	3.480
1027-1210	6	M12	10	10	18	12,0	330	245	5.050
1027-1310	6	M12	10	10	18	12,5	330	245	5.050
1028-1212	7	M12	12	12	22	14,1	340	255	5.050
1028-1412	7	M14	12	12	22	14,1	380	285	6.900
1028-1612	8	M14	12	12	24	16,0	405	310	6.900
1029-1612	8	M16	12	12	24	16,0	430	320	8.900
1029-1614	8	M16	14	14	24	16,0	430	320	9.300
1029-1814	10	M16	14	14	30	17,9	490	380	9.300
1030-1816	10	M18	16	16	30	17,9	525	395	11.400
1031-2016	12	M20	16	16	32	20,0	600	450	13.900
1031-2116	12	M20	16	16	32	21,4	600	450	13.900
1031-2018	12	M20	18	18	35	20,0	610	460	14.500
1031-2118	12	M20	18	18	35	21,4	610	460	14.500
1032-2520	14	M22	18	21	38	25,0	720	545	17.900
1033-2824	16	M24	20	24	44	28,0	820	610	20.900
1033-3124	16	M24	20	24	44	31,4	820	610	20.900
1035-3530	18	M27	22	28	50	35,5	920	690	27.000
1035-3530	19	M30	22	30	50	35,5	970	720	32.900

Dimensioni in millimetri.
Dimensions are on millimeters.

Dimensioni più grandi o speciali si possono eseguire a richiesta.
Bigger or customized dimensions can be manufactured on demand.

Tenditore canaula chiusa a due forcelle snodate, AISI 316

Turnbuckle with 2 toggles, with closed body, AISI 316



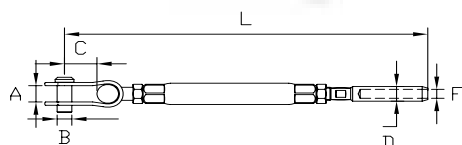
ART. REF	Ø fune Ø wire	FLT thread	A width	B pin	C depth	H body	L opened	L1 closed	Car. Rot. MBL Kg
1506-0503	3	M6	8	5	12	71	210	160	1100
1508-0604	4	M8	10	6	14	92	240	180	2150
1510-0805	5	M10	10	8	17	105	270	200	3480
1512-1006	6	M12	12	10	20	126	310	225	5050
1512-1207	7	M12	16	12	20	126	335	250	5050
1514-1207	7	M14	16	12	20	145	345	250	6900
1514-1408	8	M14	17	14	24	145	385	290	6900
1516-1408	8	M16	17	14	24	165	410	300	9300
1516-1610	10	M16	18	16	32	165	440	330	9300
1518-1610	10	M18	18	16	32	190	470	340	11400
1520-1612	12	M20	19	16	32	215	560	410	13900
1520-1812	12	M20	19	18	35	215	570	420	14500
1522-2114	14	M22	23	21	38	250	745	570	17900
1524-2416	16	M24	27	24	44	290	850	640	20900
1527-2718	18	M27	31	28	50	320	970	740	27000
1530-3019	19	M30	33	30	50	350	1030	780	32900

Dimensioni in millimetri.
Dimensions are on millimeters.

Dimensioni più grandi o speciali si possono eseguire a richiesta.
Bigger or customized dimensions can be manufactured on demand.

Tenditore canaula chiusa forcilla snodata / asta a pressare, AISI 316

Turnbuckle toggle/swage stud, with closed body, AISI 316



ART. REF	Ø fune Ø wire	FLT thread	A width	B pin	C depth	D dia. ext	L opened	L1 closed	Car. Rot. MBL Kg
1606-0603	3	M6	8	5	10	6,0	210	160	1100
1606-0703	3	M6	8	5	10	6,3	210	160	1100
1608-0704	4	M8	10	6	12	7,5	250	190	2150
1610-0905	5	M10	10	8	14	9,0	290	220	3480
1612-1206	6	M12	12	10	18	12,0	345	260	5050
1612-1306	6	M12	12	10	18	12,5	345	260	5050
1612-1407	7	M12	16	12	20	14,1	355	270	5050
1614-1407	7	M14	16	12	20	14,1	390	295	6900
1614-1608	8	M14	17	14	24	16,0	435	340	6900
1616-1614	8	M16	17	14	24	16,0	450	340	9300
1616-1810	10	M16	18	14	32	17,9	510	400	9300
1618-1816	10	M18	18	16	32	17,9	540	410	11400
1620-2016	12	M20	19	16	32	20,0	630	480	13900
1620-2116	12	M20	19	16	32	21,4	630	480	13900
1620-2018	12	M20	19	18	35	20,0	640	490	14500
1620-2118	12	M20	19	18	35	21,4	640	490	14500
1622-2521	14	M22	23	21	38	25,0	775	600	17900
1624-2824	16	M24	27	24	44	28,0	890	680	20900
1624-3124	16	M24	27	24	44	31,4	890	680	20900
1627-3528	18	M27	31	28	50	35,5	1010	780	27000
1630-3530	19	M30	33	30	50	35,5	1060	810	32900

Dimensioni in millimetri.
Dimensions are on millimeters.

Dimensioni più grandi o speciali si possono eseguire a richiesta.
Bigger or customized dimensions can be manufactured on demand.

Tenditore canaula chiusa a due forcelle tranciate, non saldate

Turnbuckle with 2 flat forks, closed body, not welded



ART. REF	Ø fune Ø wire	FLT thread	A widht	B pin	C depth	H L. canula	Car. Rot. MBL Kg
1072-150	6 1x19						
	7 1x19	M12	15,5	12	23	150	6.000
	8 7x7						
1074-150	7 1x19	M14	18	14	29	150	8.000
	8 7x7						
1076-165	8 1x19	M16	20	14	29	165	10.000
	10 7x7						
1078-190	10 1x19	M18	24	16	35	190	12.500
1079-210	12 1x19	M20	27	18	40	210	15.000

Dimensioni in millimetri.
Dimensions are on millimeters.

Dimensioni più grandi o speciali si possono eseguire a richiesta.
Bigger or customized dimensions can be manufactured on demand.



Tenditore canaula chiusa forcella tranciata / asta a pressare, non saldato

Turnbuckle fork flat / swage stud, closed body, not welded



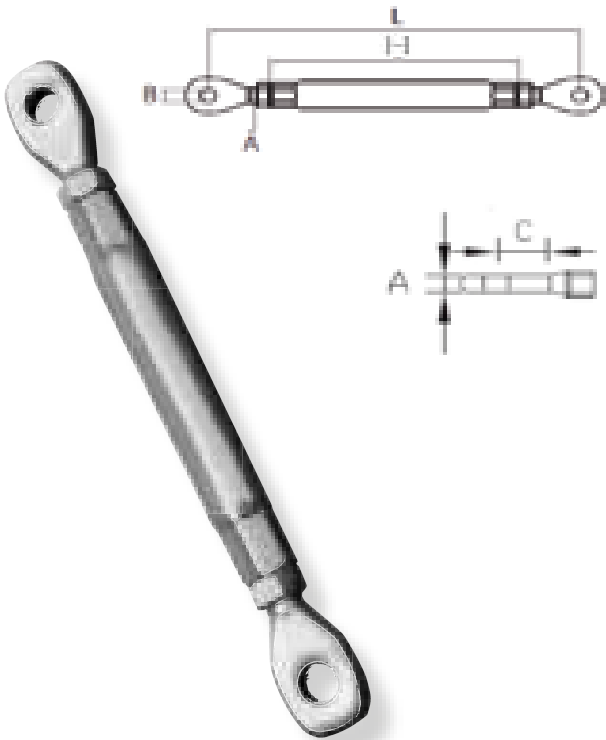
ART. REF	Ø fune Ø wire	FLT thread	A widht	B pin	C depth	D dia ext.	H L. canula	Car. Rot. MBL Kg
1082-1501206	6 1x19	M12	15,5	12	23	12,0	150	6000
1082-1501306	6 1x19	M12	15,5	12	23	12,5	150	6000
1082-1501307	7 1x19	M12	15,5	12	23	12,5	150	6000
1082-1501308	8 7x7	M12	15,5	12	23	12,5	150	6000
1083-1501407	7 1x19	M14	18	14	29	14,1	150	8000
1083-1501608	8 1x19	M14	18	14	29	16,0	150	8000
1084-1651608	8 1x19	M16	20	14	29	16,0	165	10.000
1085-1901810	10 1x19	M18	24	16	35	17,9	190	12.500
1086-2102012	12 1x19	M20	27	18	40	20,0	210	15.000
1086-2102112	12 1x19	M20	27	18	40	21,4	210	15.000

Dimensioni in millimetri.
Dimensions are on millimeters.

Dimensioni più grandi o speciali si possono eseguire a richiesta.
Bigger or customized dimensions can be manufactured on demand.



Tenditore canaula chiusa a due occhi tipo terminale, AISI 316, Turnbuckle with 2 machined eyes, closed body, AISI 316,

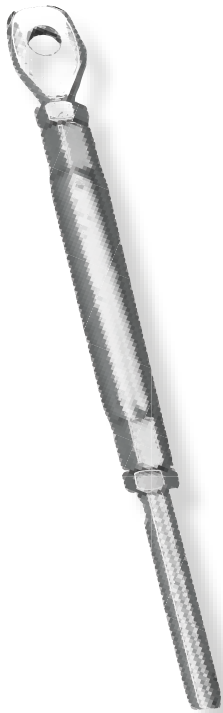


ART. REF	Ø fune Ø wire	FLT thread	A width	B pin	C depth	H body	L opened	L1 closed	Car. Rot. MBL Kg
8415-0204	2,5	M5	3,5	4,5	8	60	120	80	770
8416-0305	3	M6	4,5	5,5	10	71	150	100	1.100
8418-0406	4	M8	5	6,5	12	92	190	130	2.150
8420-0508	5	M10	7,5	8,5	15	105	230	160	3.480
8422-0610	6	M12	9	10,5	20	128	275	190	5.050
8422-0712	7	M12	11	12,5	22	128	295	210	5.050
8423-0712	7	M14	11	12,5	22	145	305	210	6.900
8423-0812	8	M14	11,5	12,5	24	145	325	230	6.900
8424-0612	8	M16	11,5	12,5	24	165	350	240	9.300
8424-0614	8	M16	11,5	14,5	24	165	350	240	9.300
8424-1014	10	M16	13	14,5	29	165	370	260	9.300
8425-1016	10	M18	13	16,5	29	190	415	285	11.400
8426-1216	12	M20	15,5	16,5	36	215	495	345	13.900
8426-1218	12	M20	15,5	18,5	36	215	495	345	14.500
8427-1421	14	M22	17,5	21,5	40	250	580	405	17.900
8428-1624	16	M24	19,7	24,5	47	290	670	460	20.900
8429-1828	18	M27	21,6	28,5	58	330	750	520	27.000
8430-1930	19	M30	21,6	30,5	62	360	800	550	32.900

Dimensioni in millimetri.
Dimensions are on millimeters.

Dimensioni più grandi o speciali si possono eseguire a richiesta.
Bigger or customized dimensions can be manufactured on demand.

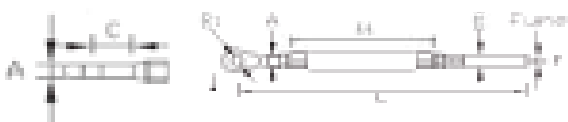
Tenditore canaula chiusa occhio / asta a pressare, AISI 316 Turnbuckle machined eye / swage stud, closed body, AISI 316



ART. REF	Ø fune Ø wire	FLT thread	A width	B pin	C depth	D dia. ext	L opened	L1 closed	Car. Rot. MBL Kg
1825-0505	2,5	M5	3,5	4,5	8	5,5	140	100	770
1825-0605	2,5	M5	3,5	4,5	8	6	140	100	770
1826-0606	3	M6	4,5	5,5	10	6,0	180	130	1.100
1826-0706	3	M6	4,5	5,5	10	6,3	180	130	1.100
1828-0706	4	M8	5	6,5	12	7,5	225	165	2.150
1830-0908	5	M10	7,5	8,5	15	9,0	265	195	3.480
1832-1210	6	M12	9	10,5	20	12	325	240	5.050
1832-1310	6	M12	9	10,5	20	12,5	325	240	5.050
1833-1412	7	M12	11	12,5	22	14,1	345	260	5.050
1834-1412	7	M14	11	12,5	22	14,1	365	270	6.900
1835-1612	8	M14	11,5	12,5	24	16,0	390	295	6.900
1836-1612	8	M16	11,5	12,5	24	16	425	315	8.900
1836-1614	8	M16	11,5	14,5	24	16	425	315	9.300
1836-1814	10	M16	13	14,5	29	17,9	465	355	9.300
1838-1816	10	M18	13	16,5	29	17,9	500	370	11.400
1840-2016	12	M20	15,5	16,5	36	20	600	450	13.900
1840-2116	12	M20	15,5	16,5	36	21,4	600	450	13.900
1840-2018	12	M20	15,5	18,5	36	20	600	450	14.500
1840-2118	12	M20	15,5	18,5	36	21,4	600	450	14.500
1841-2521	14	M22	17,5	21,5	40	25,0	695	520	17.900
1842-2824	16	M24	19,7	24,5	47	28	800	590	20.900
1842-3124	16	M24	19,7	24,5	47	31,4	800	590	20.900
1843-3528	18	M27	21,6	28,5	58	35,5	900	670	27.000
1844-3530	19	M30	21,6	30,5	62	35,5	950	700	32.900

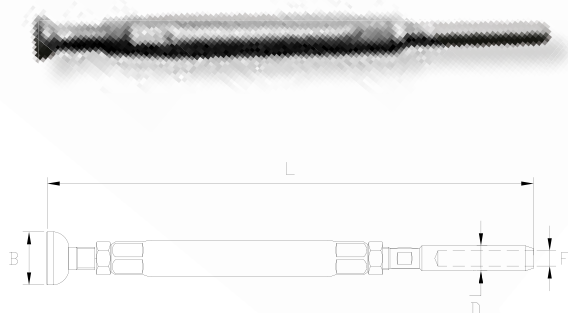
Dimensioni in millimetri.
Dimensioni più grandi o speciali a richiesta.
Le dimensioni possono essere variate senza alcun preavviso.

Dimensions on millimeters.
Bigger or customized dimensions on demand.
Dimensions can be changed without any prior notice.



Tenditori semisfera / pressare, AISI 316

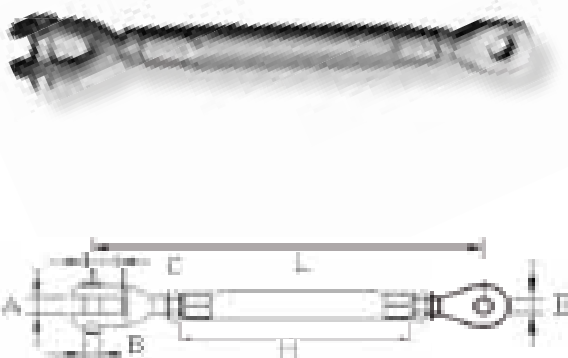
Stemball / swage terminal turnbuckles, AISI 316



ART. REF	Ø fune Ø wire	FLT thread	B head	D dia.ext	H body	L opened	L1 closed	Car. Rot. MBL Kg
1473-0407	4	M8	14	7,5	92	225	165	2.150
1475-0509	5	M10	16	9,0	105	265	195	3.480
1477-0613	6	M12	19	12,5	126	320	235	5.050
1477-0714	7	M12	22	14,1	145	345	260	5.050
1479-0714	7	M14	22	14,1	145	365	270	6.900
1479-0816	8	M14	25	16,0	145	405	310	6.900
1481-0816	8	M16	25	16,0	165	420	310	9.300
1481-1018	10	M16	28	17,8	165	460	350	9.300
1483-1918	10	M18	28	17,8	190	500	370	11.400
1485-1220	12	M20	31	20,0	215	590	440	13.900
1485-1221	12	M20	31	21,4	215	590	440	14.500

Tenditore canaula chiusa forcella fresata / occhio, AISI 316

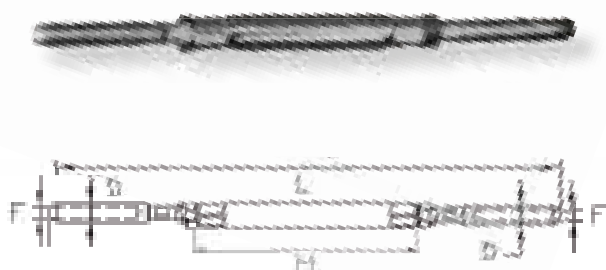
Turnbuckle fork / eye, closed body, AISI 316



ART. REF	Ø fune Ø wire	FLT thread	A width	B pin	C depth	L opened	L1 closed	Car. Rot. MBL Kg
1044-0604	4	M8	8	6	12	210	150	2.150
1045-0805	5	M10	8	8	14	230	160	3.480
1046-0806	6	M12	10	10	18	280	195	5.050
1046-1207	7	M12	12	12	20	300	215	5.050
1047-1207	7	M14	12	12	20	320	225	6.900
1047-1208	8	M14	12	12	24	345	250	6.900
1048-1408	8	M16	14	14	24	370	260	9.300
1048-1410	10	M16	14	14	32	400	290	9.300
1049-1610	10	M18	16	16	32	430	300	11.400
1050-1612	12	M20	16	16	32	505	355	13.900
1050-1812	12	M20	18	18	35	515	365	14.500
1051-2114	14	M22	18	21	38	595	420	17.900
1052-2416	16	M24	20	24	44	685	475	20.900

Tenditore canaula chiusa asta a pressare / asta a pressare, AISI 316

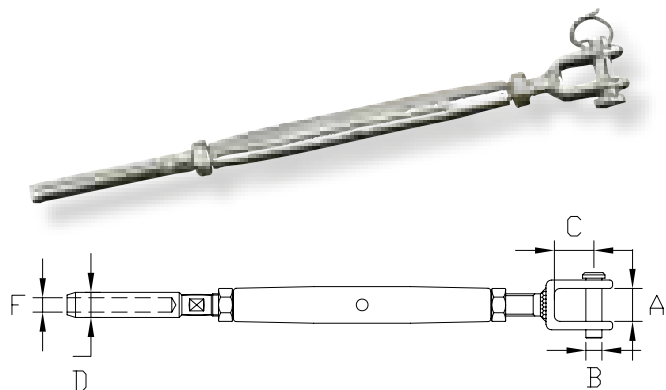
Turnbuckle swage stud / swage stud, with closed body, AISI 316



ART. REF	Ø fune Ø wire	FLT thread	D dia.ext	H body	L opened	L1 closed	Car. Rot. MBL Kg
1856-0703	3	M6	6,3	71	210	160	1.100
1858-0704	4	M8	7,5	92	260	200	2.150
1860-0905	5	M10	9,0	105	310	240	3.480
1862-1306	6	M12	12,5	126	375	290	5.050
1862-1407	7	M12	14,1	145	415	330	5.050
1864-1407	7	M14	14,1	145	435	340	6.900
1864-1608	8	M14	16,0	145	475	380	6.900
1866-1608	8	M16	16,0	165	500	390	9.300
1866-1810	10	M16	17,8	165	550	440	9.300
1868-1810	10	M18	17,8	190	590	460	11.400
1870-2012	12	M20	20,0	215	690	540	13.900
1870-2112	12	M20	21,4	215	690	540	14.500
1872-2514	14	M22	25,0	250	805	630	17.900
1874-2816	16	M24	28,0	290	920	710	20.900

Tenditori in acciaio inox, canaula chiusa, forcella saldata/pressare.

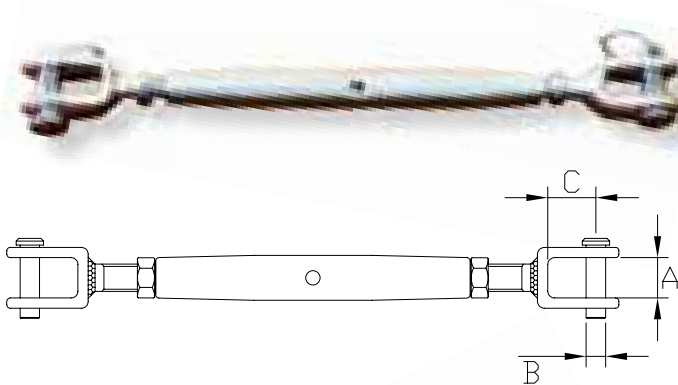
S.S. turnbuckles with closed body, welded fork. / swage



forc/press fork/swage	fune wire	filettatura thread	A	B	C	D
1252-B	4	M8	11,5	8	16	7,5
1253-B	5	M10	13	9,5	19	9
1254-B	6	M12	14	11	26	12,6
1255-B	7	M14	15	12	27	14
1256-B	8	M16	17	14	28	16
1257-B	10	M20	21	16	31	17,8

Tenditori in acciaio inox, canaula chiusa, a due forcelle saldate.

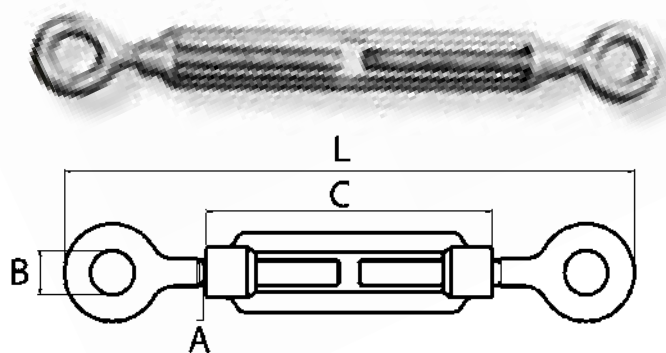
S.S. turnbuckles with closed body, with two welded forks



2 Forcelle 2 Forks	fune wire	filettatura thread	A	B	C
1252-A	4	M8	11,5	8	16
1253-A	5	M10	13	9	19
1254-A	6	M12	14	11	26
1255-A	7	M14	15	12	27
1256-A	8	M16	17	14	28
1257-A	10	M18	21	16	31

Tenditori a due occhi, canaula aperta, tipo economico inox.

Two eyes turnbuckle, with open body, S.S..

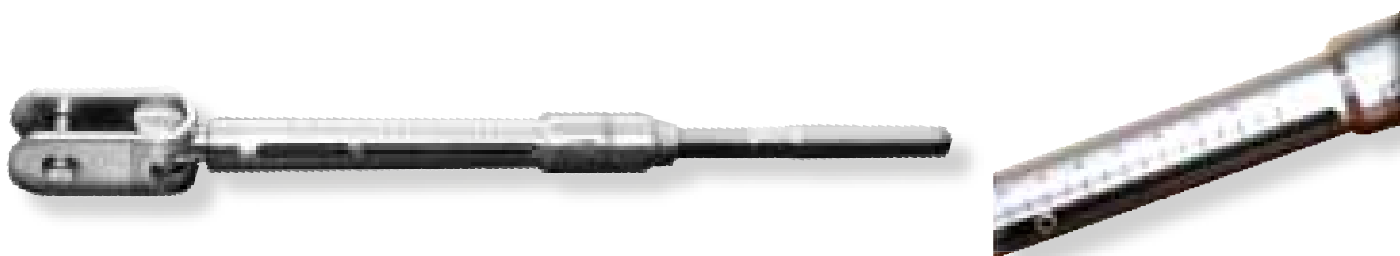


RIF. ART.	A	B	C	L
8315	M5	8	70	120
8316	M6	10	90	148
8318	M8	14	120	195
8320	M10	16	150	240
8322	M12	18	200	305
8324	M16	24	250	385
8328	M20	29	295	455

TENDITORI BIMETALLO GRADUATI SPECIAL CALIBRATED TURNBUCKLES

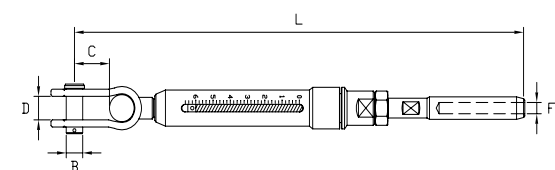
Il tenditore bimetallo graduato regola la tensione della fune tramite una semplice boccola filettata, in bronzo "HR" antigrippaggio, che permette una regolazione facile e precisa della sola estremità superiore, con un design gradevole e funzionale.

This special calibrated turnbuckle is screwed by a free bronze "HR" antiseizing threaded bushing, which allow an easy and an accurate monoregulation of the only upside stud, with a nice and functional design.



Tenditore bimetallo monoregolazione - forcella snodata/pressare

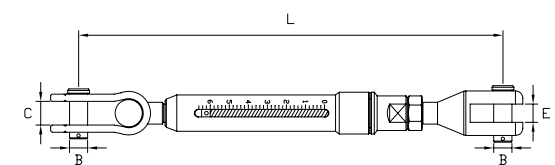
Bimetal monoreg. turnbuckle - toggle / swage.



Graduato calibrated	non graduato not calibrated	funne wire	filetto thread	B	C	D	L	L ₁	car. rott. b. load - KG
1204	1234	4	M8	Ø 6	13	7,5	180	240	2.150
1205	1235	5	M10	Ø 8	17	9	208	278	3.450
1206	1236	6	M12	Ø 10	19	12,5	240	320	4.950
1207	1237	7	M14	Ø 12	23	14	275	365	6.900
1208	1238	8	M14	Ø 12	27	16	285	375	6.900
1209	1239	8	M16	Ø 12	27	16	315	415	9.200
1209-14	1239-14	10	M16	Ø 14	27	16	315	415	9.200
1210	1240	10	M18	Ø 14	31	17,8	365	475	11.400
1211	1241	10	M18	Ø 16	31	17,8	365	475	11.400
1212	1242	12	M20	Ø 16	35	21,4	415	535	14.500
1213	1243	12	M20	Ø 18	35	21,4	415	535	14.500

Tenditore bimetallo monoregolazione - a due forcelle snodate

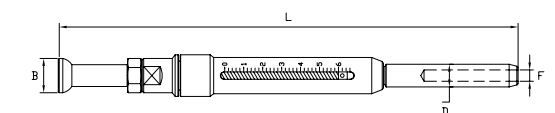
Bimetal monoreg. turnbuckle - two toggle.



Graduato calibrated	non graduato not calibrated	funne wire	filetto thread	B	C	E	L	L ₁	car. rott. b. load - KG
1304	1334	4	M8	Ø 6	13	7	160	220	2.150
1305	1335	5	M10	Ø 8	17	9	193	263	3.450
1306	1336	6	M12	Ø 10	19	10	210	290	4.950
1307	1337	7	M14	Ø 12	23	12	240	330	6.900
1308	1338	8	M14	Ø 12	27	12	250	340	6.900
1309	1339	8	M16	Ø 12	27	12	275	375	9.200
1310	1340	10	M18	Ø 14	31	14	320	430	11.400
1311	1341	10	M18	Ø 16	31	14	320	430	11.400
1312	1342	12	M20	Ø 16	35	16	385	505	14.500
1313	1343	12	M20	Ø 18	35	16	385	505	14.500

Tenditore bimetallo monoregolazione - semisfera/pressare

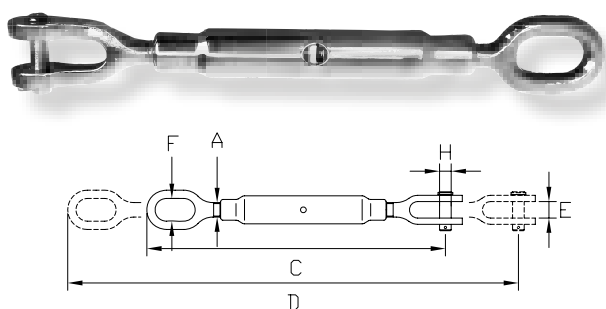
Bimetal monoreg. turnbuckle - stemball / swage.



Graduato calibrated	non graduato not calibrated	funne wire	filetto thread	B	D	L	L ₁	car. rott. b. load - KG
1404	1434	4	M8	14	7,5	165	225	2.150
1405	1435	5	M10	16	9	190	260	3.450
1406	1436	6	M12	19	12,5	220	300	4.950
1407	1437	7	M14	22	14	252	342	6.900
1408	1438	8	M14	25	16	262	352	6.900
1409	1439	8	M16	25	16	270	385	9.200
1410	1440	10	M18	28	17,8	295	410	11.400
1411	1441	10	M18	28	17,8	335	445	11.400
1412	1442	12	M20	31	21,4	380	500	14.500

Tenditori UNI2018 e UNI2020 in acciaio inox

UNI2018 - UNI2020 turnbuckles on stainless steel.



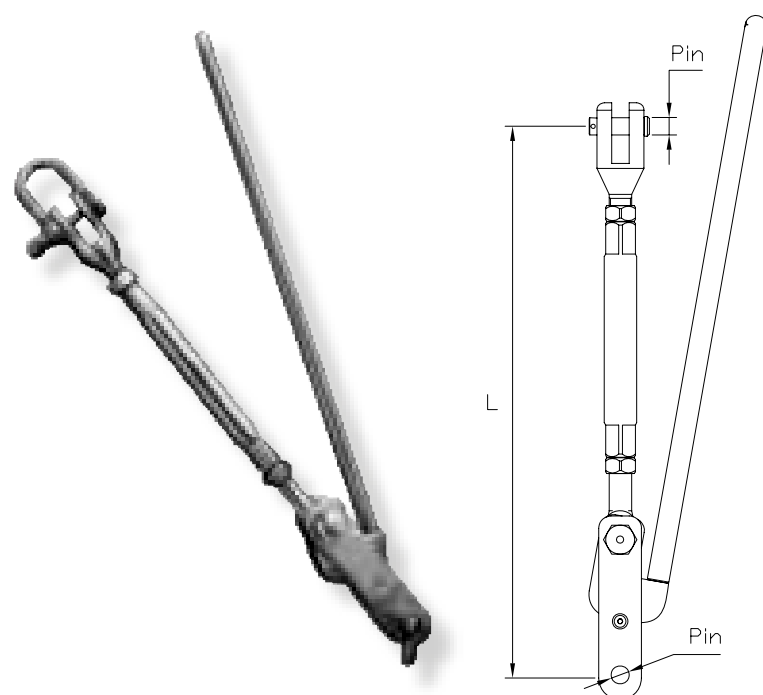
ART.	A	C	D	E	F	H	car. rott. Kg Break. Load
1015	M6	180	270	8	12	6,5	1.190
1016	M8	216	320	10	14	7,5	2.190
1017	M10	258	375	12	16	8,5	3.450
1018	M12	302	425	16	20	10,5	4.950
1019	M16	355	485	20	25	12,5	9.300
1020	M20	385	525	24	25	16,5	14.700
1021	M22	440	585	28	30	20,5	18.00
1022	M27	468	620	32	30	22,5	27.500

Tesastrallo "KANDAR", AISI 316.

"KANDAR" TYPE BABY STAY TURNBUCKLE, AISI 316

Pratico e funzionale sistema di aggancio e sgancio rapido per sartie. Attacco in basso a gancio od a forcella a scelta.

Practical and functional system coupling and quick release for Babystay.
A choice bottom attack toggle quick pin or hook the both.



Con perno rapido nella forcella inferiore.
With toggle quick pin at the bottom side.

ART.	fune wire	filetto thread	L	L ₁	perno pin
6111	5 - 6	M10	300	225	Ø 8
6112	6 - 7	M12	340	260	Ø 10
6113	7 - 8	M14	390	300	Ø 12
6114	8 - 10	M16	440	350	Ø 14
6115	10	M18	495	395	Ø 14
6115-A	12	M20	540	440	Ø 16

Con gancio nella parte inferiore.
With hook at the bottom side.

ART.	fune wire	filetto thread	L	L ₁
6111-G	5 - 6	M10	350	270
6112-G	6 - 7	M12	410	320
6113-G	7 - 8	M14	440	350
6114-G	8 - 10	M16	490	390
6115-G	10 - 12	M18	540	440

Leva sgancio rapido per tenditori, inox.

Slip hook for turnbuckles, S.S.



ART.	A Filo	L Lunghezza	tenditore turnbuckle	fune wire
6108	8	220	M10	Ø 5/6
6109	10	260	M12	Ø 6/7

NOTA: - Solo leva + anello
- Turnbuckle not included

Tesastrallo graduato - AISI 316 / boccola in Bz "HR".

Back-Stay Adjuster calibrated - AISI 316 / inside thread on bronze "HR".

Con nr. 2 maniglie inox (AISI 316).

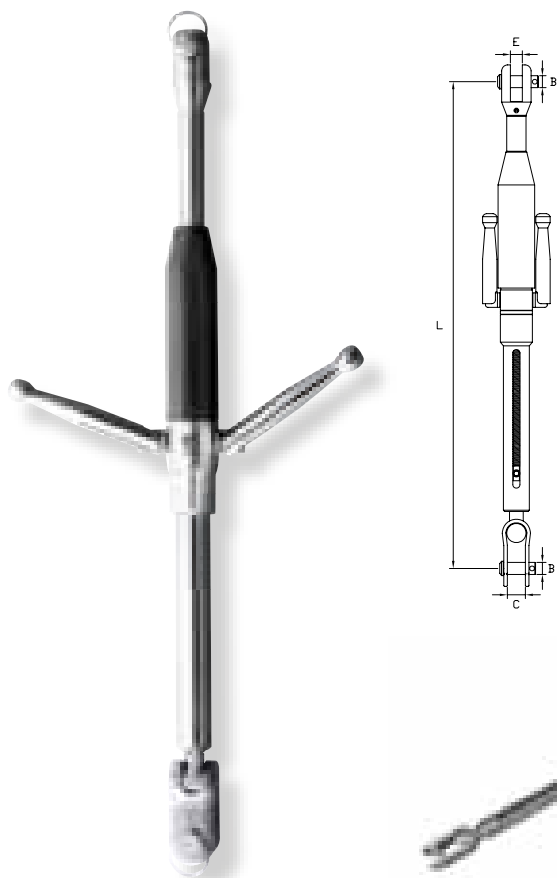
With nr. 2 handles (AISI 316).

ART.	fune wire	filetto thread	B	C	E	L	L ₁
6116	6	M14	12	16	12	370	490
6117	7	M16	12	17	12	470	580
6118	8	M18	14	18	14	480	620
6119	10	M20	16	19	16	525	675

Con nr. 1 leva a cricchetto inox (AISI 316).

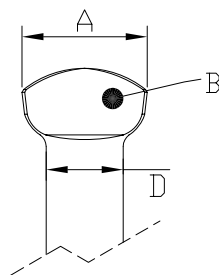
With nr. 1 lever ratchet (AISI 316).

ART.	fune wire	filetto thread	B	C	E	L	L ₁
6126	6	M14	12	16	12	370	490
6127	7	M16	12	17	12	425	580
6128	8	M18	14	18	14	480	620
6129	10	M20	16	19	16	525	675



Attacco a martello per fune tessile - AISI 316.

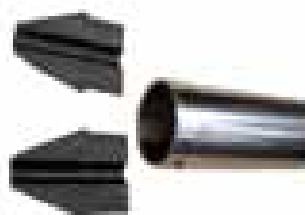
T - Ring for fiber rope - AISI 316.



ART.	grd. size	A head	B thick	D diam	F foro
2064-TR	4 - 5	18	7,5	9,5	16
2065-TR	6 - 7	23	9,5	12	19
2066-TR	8	26	11	16	24
2067-TR	10	27,5	14	18	30

Copritenditore inox AISI 316 / nylon.

Stainless Steel turnbuckle covers - AISI 316 / nylon.



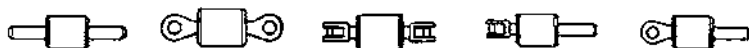
Dimensioni a richiesta (diam. max ed altezza max tenditori)

Custom dimensions (diam. max and high of turnbuckles)

ISOLATORI RADIO PER APPLICAZIONE SUL SARTIAME BACKSTAY INSULATORS

L'isolatore radio "GARELLI" permette di utilizzare lo strallo come una potente antenna radio, migliorando notevolmente la ricezione, eliminando ogni disturbo. L'isolatore è stato progettato e costruito secondo criteri di massima sicurezza e di isolamento. Infatti il materiale isolante interno lavora a compressione e non a trazione.

"GARELLI" backstay insulators allows to use the backstay as a powerful aerial, so that it improves remarkably the radio's reception, because it void every static. Backstay insulator has been planned and realized according to highest safety's and insulation's principles. Indeed the inside insulating material works on pressure and not on traction.

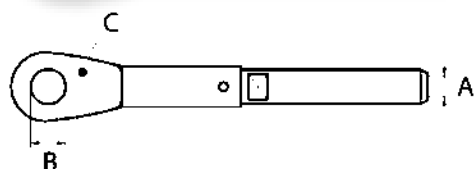
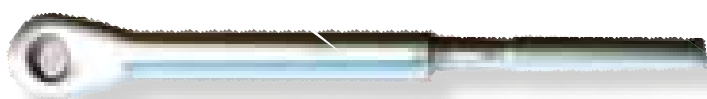


FUNE WIRE	1	2	3	4	5
Ø 6	art. 6101/A	art. 6121/A	art. 6141/A	art. 6161/A	art. 6181/A
Ø 8	art. 6101/B	art. 6121/B	art. 6141/B	art. 6161/B	art. 6181/B
Ø 10	art. 6102/A	art. 6122/A	art. 6142/A	art. 6162/A	art. 6182/A
Ø 12	art. 6102/B	art. 6122/B	art. 6142/B	art. 6162/B	art. 6182/B
Ø 14	art. 6103/A	art. 6123/A	art. 6143/A	art. 6163/A	art. 6183/A
Ø 16	art. 6103/B	art. 6123/B	art. 6143/B	art. 6163/B	art. 6183/B
Ø 18	art. 6104/A	art. 6124/A	art. 6144/A	art. 6164/A	art. 6184/A
Ø 20	art. 6104/B	art. 6124/B	art. 6144/B	art. 6164/B	art. 6184/B



Terminali ad occhio smontabile per avvolgifiocco, AISI 316.

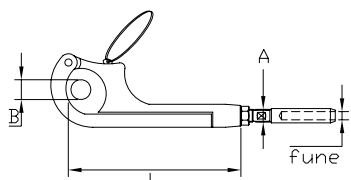
Jointed eye terminal, AISI 316.



RIF. ART.	A Fune	B Pin	C Tick
6985	5	10,5	9
6986	6	12,5	11
6987	7	12,5	11,5
6988	8	14,5	13,5
6990	10	16,5	15,5
6992	12	20,5	18,5

Tenditore a moschettone inox per draglia, AISI 316.

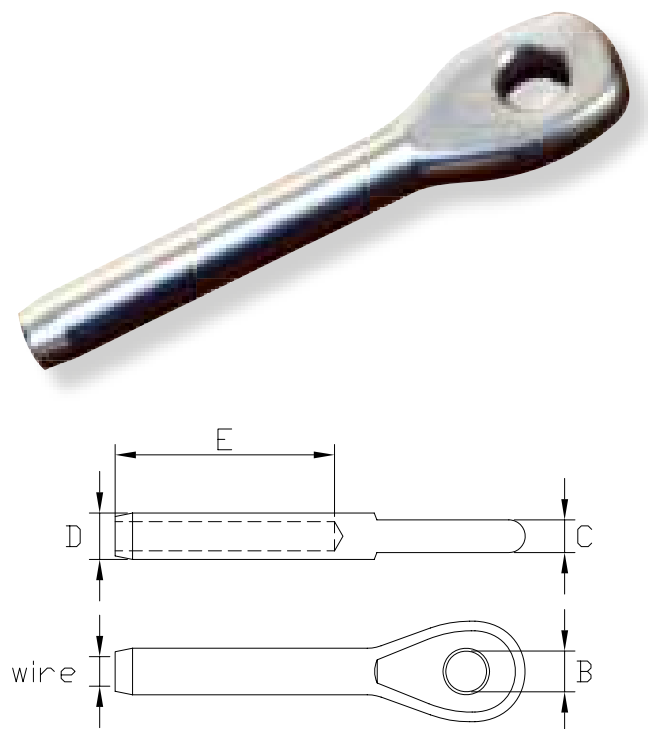
Pelikan hook - Swage turnbuckle AISI 316.



RIF. ART.	A	FUNE WIRE	B	L
6949	M6	4	14	70
6950	M6	5	14	70
6951	M8	4	16	93
6952	M8	5	16	93
6953	M8	6	16	93

Terminali ad occhio inox AISI 316.

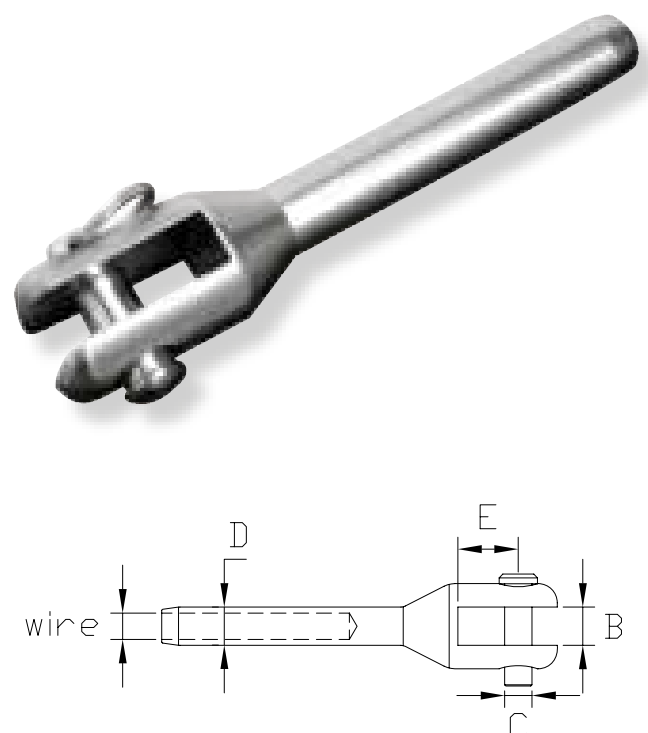
Eye terminals on stainless steel AISI 316.



RIF ART	FUNE WIRE	B eye hole	C thick	D d. ext	E depth
2040-06	3	5,5	4,5	6,0	30
2040-07	3	5,5	4,5	6,3	30
2041-07	4	6,5	5,0	7,5	40
2041-08	4	6,5	5,0	8,0	40
2042-09	5	8,5	7,5	9,0	50
2042-10	5	8,5	7,5	10,0	50
2043-12	6	10,5	9,0	12,0	60
2043-13	6	10,5	9,0	12,5	60
2044-14	7	12,5	11	14,0	70
2045-1612	8	12,5	11,5	16,0	80
2045-1614	8	14,5	11,5	16,0	80
2046-1814	10	14,5	13,0	17,8	100
2046-1816	10	16,5	13,0	17,8	100
2046-2016	10	16,5	13,0	20,0	100
2047-2016	12	16,5	15,5	20,0	120
2047-2116	12	16,5	15,5	21,4	120
2047-2118	12	18,5	15,5	21,4	120
2048-25	14	21,5	18,5	25,0	140
2049-31	16	24,5	19,7	31,4	160
2050-36	19	31	24	35,5	190

Terminali a forcella, inox AISI 316.

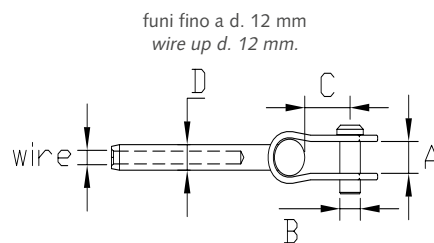
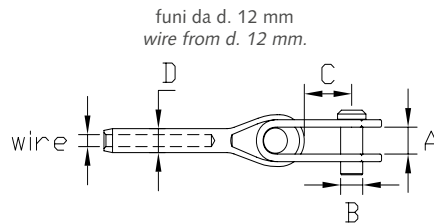
Fork terminals on stainless steel AISI 316.



RIF ART	FUNE WIRE	B width	C pin	D d. ext	E depth
2052-06	3	6,0	5,0	6,0	10
2052-07	3	6,0	5,0	6,3	10
2053-07	4	8,0	6,0	7,5	12
2053-08	4	8,0	6,0	8,0	12
2054-09	5	8,0	8,0	9,0	14
2054-10	5	8,0	8,0	10,0	14
2055-12	6	10,0	10,0	12,0	18
2055-13	6	10,0	10,0	12,5	18
2056-14	7	12,0	12,0	14,0	20
2057-1612	8	12,0	12,0	16,0	24
2057-1614	8	12,0	14,0	16,0	24
2058-1814	10	14,0	14,0	17,8	32
2058-1816	10	14,0	16,0	17,8	32
2058-2014	10	14,0	14,0	20,0	32
2059-2016	12	16,0	16,0	20,0	32
2059-2116	12	16,0	16,0	21,4	32
2059-2118	12	18,0	18,0	21,4	35
2060-25	14	18,0	20,0	25,0	38
2061-28	16	20,0	24,0	28,0	44
2062-35	19	22,0	30,5	35,5	50

Terminali a forcella snodata, inox AISI 316.

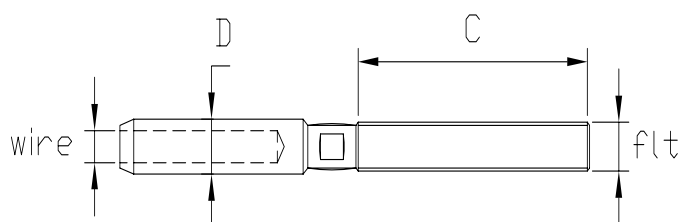
Toggle terminals on stainless steel AISI 316.



RIF. ART	FUNE WIRE	A width	B pin	C depth	D d.ext
2404-07	4	10,0	6,0	14	7,5
2404-08	4	10,0	6,0	14	8,0
2405-09	5	10,0	8,0	17	9,0
2405-10	5	10,0	8,0	17	10,0
2406-12	6	12,0	10,0	20	12,0
2406-13	6	12,0	10,0	20	12,5
2407-14	7	16,0	12,0	26	14,0
2408-1612	8	17,0	12,0	27	16,0
2408-1614	8	17,0	14,0	27	16,0
2410-1814	10	18,0	14,0	32	17,8
2410-1816	10	18,0	16,0	32	17,8
2410-2014	10	18,0	14,0	32	20,0
2410-2016	10	18,0	16,0	32	20,0
2412-2016	12	19,0	16,0	35	20,0
2412-2018	12	19,0	18,0	35	20,0
2412-2116	12	19,0	16,0	35	21,4
2412-2118	12	19,0	18,0	35	21,4
2414-25	14	23,0	21,0	49	25,0
2416-31	16	27,0	24,0	55	31,4
2419-36	19	33,0	30,0	60	26,5

Terminali filettati a pressare, AISI 316.

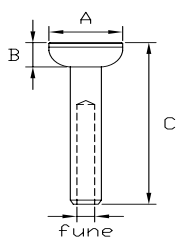
Stud terminals AISI 316.



ART. Destro-Right	ART. Sinistro-Left	FUNE WIRE	Filetto Thread	C lenght	D d.ext
2101 - 06DX	2101 - 06SX	3	M6	40	6,0
2101 - 07DX	2101 - 07SX	3	M6	40	6,3
2102 - 07DX	2102 - 07SX	4	M8	50	7,5
2102 - 08DX	2102 - 08SX	4	M8	50	8,0
2103 - 09DX	2103 - 09SX	5	M10	60	9,0
2103 - 10DX	2103 - 10SX	5	M10	60	10,0
2104 - 12DX	2104 - 12SX	6	M12	70	12,0
2104 - 13DX	2104 - 13SX	6	M12	70	12,5
2105 - 14DX	2105 - 14SX	7	M14	80	14,0
2106 - 16DX	2106 - 16SX	8	M16	90	16,0
2107 - 17DX	2107 - 17SX	10	M18	110	17,8
2107 - 20DX	2107 - 20SX	10	M18	110	20,0
2108 - 20DX	2108 - 20SX	12	M20	120	20,0
2108 - 21DX	2108 - 21SX	12	M20	120	21,4
2108 - 22DX	2108 - 22SX	12	M20	120	22,0
2109 - 25DX	2109 - 25SX	14	M22	140	25,0
2110 - 31DX	2110 - 31SX	16	M24	160	31,4
2111 - 35DX	2111 - 35SX	19	M27	190	35,5
2112 - 35DX	2112 - 35SX	19	M30	190	35,5
2113 - 38DX	2113 - 38SX	22	M33	220	38,5
2114 - 42DX	2114 - 42SX	24	M36	240	42,8

Terminali a semisfera AISI 316.

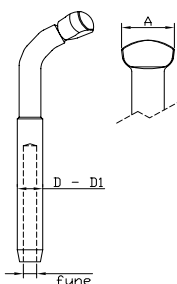
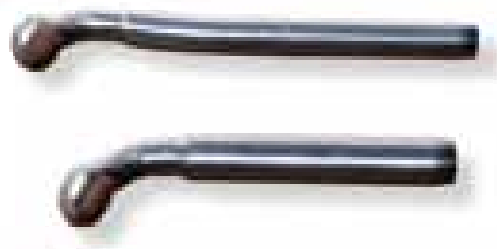
Half-round Terminal AISI 316.



RIF. ART.	FUNE WIRE	A	B	C	D
2764	4	14	6	60	7,5
2765	5	16	7	72	9
2766	6	20	8	87	12,5
2767	7	21,5	8,5	100	14,0
2768	8	22,5	11,5	115	16,0
2769	10	28	12	135	17,8

Terminali a martello AISI 316.

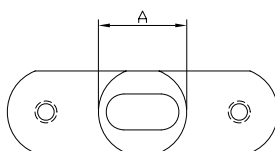
"T" terminals AISI 316.



N° 1 Piegia N° 1 Fold	N° 2 Piegia N° 2 Fold	FUNE WIRE	A HEAD	B THICK.	D
2064-A07	2064-SA07	4	18,5	6,5	7,5
2064-A08	2064-SA08	4	18,5	6,5	8
2064-B09	2064-SB09	5	18,5	7,5	9
2064-B10	2064-SB10	5	18,5	7,5	10
2065-A12	2065-SA12	6	22	10,5	12
2065-A13	2065-SA13	6	22	10,5	12,5
2065-B14	2065-SB14	7	22	10,5	14
2066-A16	2066-SA16	8	25	13,5	16
2066-B18	2066-SB18	10	27,5	16,0	17,8
2066-B20	2066-SB20	10	27,5	16,0	20

Controplacche forgiate per terminali a martello, AISI 316.

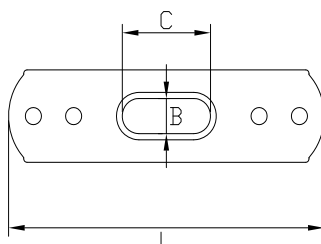
Mast plates for "T" terminals, forged, AISI 316.



RIF. ART.	FUNE WIRE	A	Foro Ovale Oval Hole
2064	4-5	26	19x11
2065	6-7	31,5	24x13
2066	8-10	36,5	27x16

Controplacca tipo economico tranciata, AISI 316.

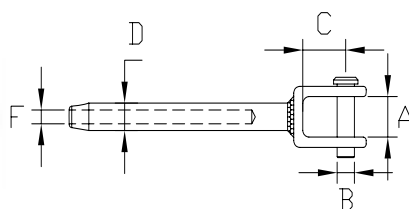
Mast plate for "T" terminal, AISI 316.



RIF. ART.	FUNE WIRE	L	FORO OVALE B x C
2064-EC	4 - 5	88	10 X 27
2065-EC	6 - 7	122	15,5 X 35
2066-EC	8	150	18,5 X 41
2067-EC	10	150	18,5 X 41

Terminale a forcella saldata, AISI 316.

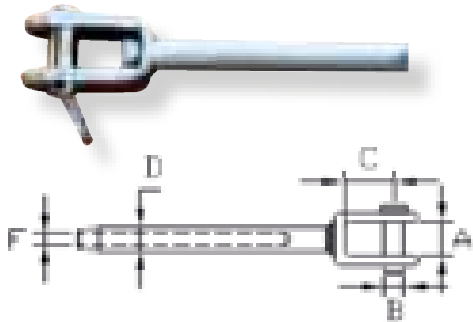
S.S. welded fork terminals, AISI 316.



RIF. ART.	FUNE WIRE	A	B	C	D
2235	4	11,5	8	15	7,5
2237	5	13	9	19	9
2239	6	15	12	27	12,6
2240	7	15	12	27	14,0
2241	8	17	14	28	16,0
2243	10	21	16	31	17,8

Terminale a forcella tranciata per linea vita

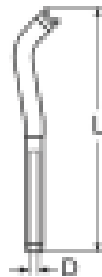
Safety line fork terminal



ART.	FUNE	VALIDIO PER FUNI	A	B	C	D	CAR. ROT
2448-13	d. 8	7x7 e 7x19	15,5	12	23	12,5	kg 5.150
2449-14	d. 8	7x7 e 7x19	17,5	14	25	14,0	kg 5.450
2450-16	d. 8	7x7 e 7x19	19,5	14	27	16,0	kg 5.950

Terminale a martello tipo eco.

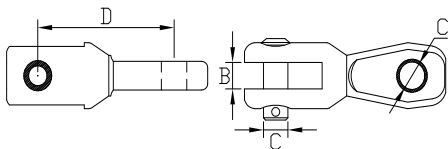
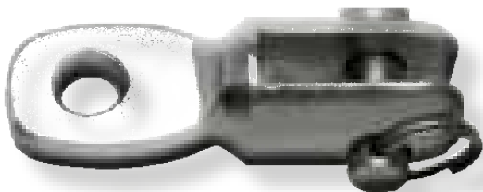
Hammer terminals, AISI 316.



RIF. ART.	FUNE WIRE	L	OD
2063-AEC	3	85	6,3
2064-AEC	4	100	7,5
2064-BEC	5	115	9
2065-AEC	6	140	12,6
2065-BEC	7	145	14,1
2066-AEC	8	185	16
2066-BEC	10	215	17,8

Snodi per tenditore, AISI 316.

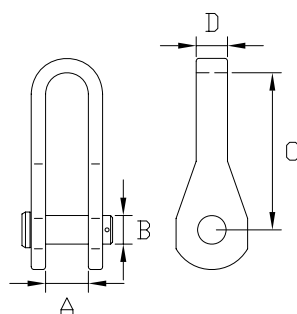
Toggles for turnbuckles, AISI 316.



RIF. ART.	A Tenditore - Screw	B	C	D
2068	M6	5	5	27
2069	M8	8	6	37
2070	M10	8	8	40
2071	M12	10	10	48
2072	M14	12	12	58
2073	M16	12	12	65
2074	M18	14	14	80
2075	M20	16	16	90
2076	M22	18	20	96
2077	M24	20	24	105
2078	M27	20	28	115

Snodi tipo piatto piegato ad "U", AISI 316.

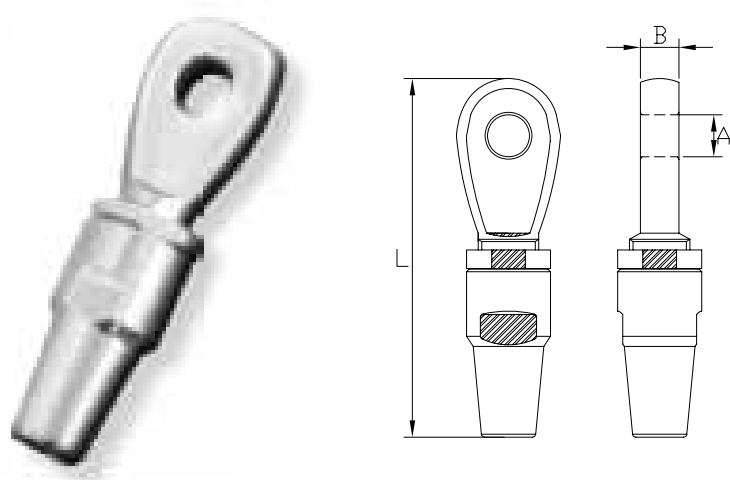
S.S. "U" strap type toggle, AISI 316.



RIF. ART.	FUNE WIRE	A	B	C	D
2172	5	12	8	45	8
2173	6	14	10	59	12
2174	7	16	12	62	12
2175	8	16	14	62	14
2176	10	19	16	70	16
2177	12	22	18	85	18

Terminali manuali conici ad occhio, AISI 316.

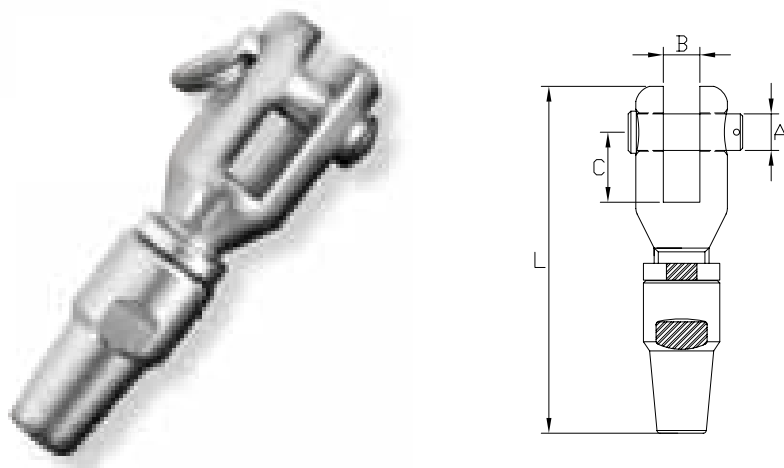
Swageless eye terminals, AISI 316.



RIF. ART.	FUNE WIRE	A	B	L
2504	4	6,5	5	57
2505	5	8,5	7	75
2506	6	10,5	9	90
2507	7	12,5	10,5	96
2508	8	12,5	11,5	102
2510	10	14,5	13,5	122
2512	12	16,5	16	148
2514	14	20,5	18	165
2516	16	24,5	20	165

Terminale manuale conici a forcella, AISI 316.

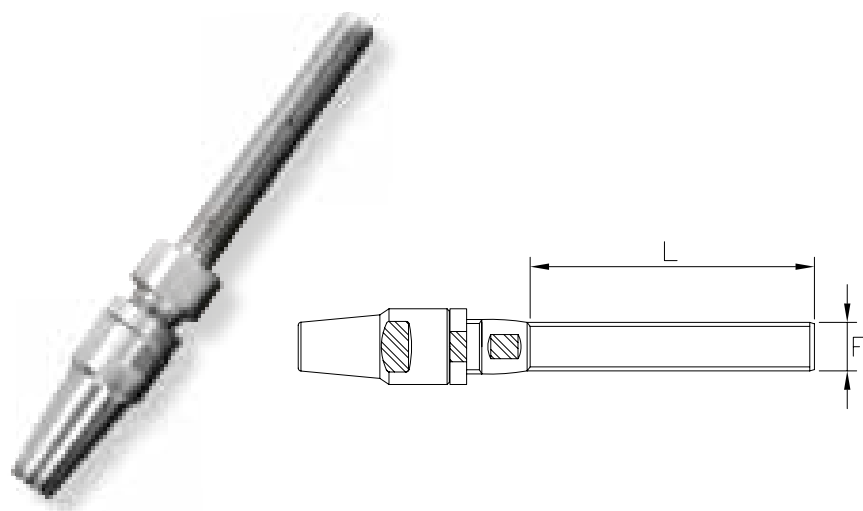
Swageless fork terminals, AISI 316.



RIF. ART.	fune wire	A	B	C	L
2604	4	6	8	12	63
2605	5	8	8	14	76
2606	6	10	10	18	90
2607	7	12	12	22	102
2608	8	12	12	23	112
2610	10	14	14	32	135
2612	12	16	16	32	156
2614	14	20	18	38	187
2616	16	24	20	44	209

Terminali manuali conici filettati, AISI 316.

Swageless threaded terminal, AISI 316.



RIF. ART.	fune WIRE	FILETTO THREAD	L LENGHT
2553	3	M6	40
2554	4	M8	50
2555	5	M10	60
2556	6	M12	70
2557	7	M14	80
2558	8	M16	90
2558-RB	8	M12	85
2559	10	M18	110

Mollone per ormeggio in acciaio plastificato, inox, consente un ormeggio sicuro e silenzioso.

Mooring spring on plasticized steel, stainless steel, allows a silent, lasting and safe mooring.



RIF. ART.	PESO BARCA BOAT WEIGHT	F	D	L	PESO WEIGHT
MOL-200	FINO A 2,5 TON	6	50	380	kg 1
MOL-250	FINO A 7,5 TON	8	65	480	kg 2
MOL-300	FINO A 15 TON	10	80	560	kg 4
MOL-400	FINO A 25 TON	12	100	560	kg 6,5
MOL-500	FINO A 30 TON	14	120	640	kg 10,5

Il "MOL" è un ammortizzatore parastrappi studiato appositamente per risolvere in modo semplice e valido, tutti i difetti che normalmente caratterizzano i molloni tradizionali.

La molla è realizzata in speciale acciaio armonico adatto a sopportare le più forti sollecitazioni senza subire rotture, e viene rivestita a caldo in "Rilsan" per non subire ossidazioni.

Il "Rilsan" è un materiale di qualità, resistente alle escursioni termiche ed ai raggi ultravioletti.

Gli attacchi sono robusti e sono realizzati in acciaio inox AISI 316.

Si tratta di molloni "silenziosi", in quanto lo scorrimento degli attacchi con i battenti avviene in modo silenzioso, senza cigolio, perché le parti in acciaio non vengono mai a contatto tra loro ma rimangono isolate per mezzo degli stessi battenti che sono realizzati in "Nylon" (materiale ad alto carico di rottura e resistente agli agenti atmosferici).

The mooring shock-absorber Garelli, model "MOL", is made with spring on harmonic steel, hot-covered with "Rilsan", and with connection on stainless steel AISI 316.

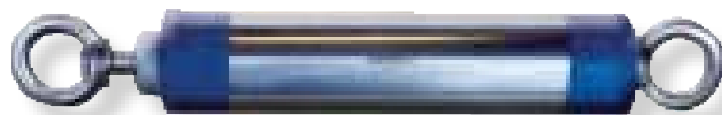
In this way, the spring is protected against corrosion and against the sun rays, and it will have no breaking problems, because being in harmonic steel, you can close the spring completely, and then, when you will let it, the spring will keep the same initial length.

The heads are made on quality "Nylon" and not on PVC, and for this reason, it will have no problems with the sun rays and with the salinity of the sea.

The "Mol" Garelli allows a silent, lasting and safe mooring.

Ammortizzatore per ormeggio idraulico inox MED.

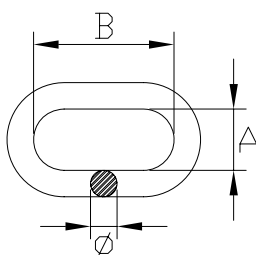
S.S. Hydraulic Mooring Shock-absorber MED.



RIF. ART.	PESO BARCA BOAT WEIGHT	D	F	L	PESO WEIGHT
MED-01	FINO A 20 TON	60	35	410	kg 2,5
MED-02	FINO A 35 TON	60	35	410	kg 3
MED-03	FINO A 60 TON	90	40	520	kg 4
MED-04	FINO A 80 TON	90	40	520	kg 4,5
MED-05	FINO A 100 TON	130	50	580	kg 6

Catena in acciaio Inox tipo DIN766, AISI 316.

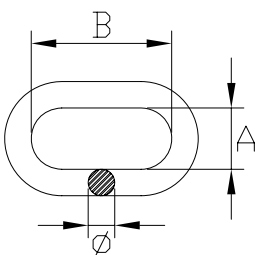
S.S. Chain type DIN766, AISI 316.



RIF. ART.	TIPO TYPE	Ø	KG/mt	A	B	MT.
7925	DIN 766 A4	5	0,50	7	18,5	50
7926	DIN 766 A4	6	0,75	8	18,5	50
7928	DIN 766 A4	8	1,35	10	24	25
7930	DIN 766 A4	10	2,25	14	28	25

Catena in acciaio Inox tipo Genovese, DIN 5685/A, AISI 304.

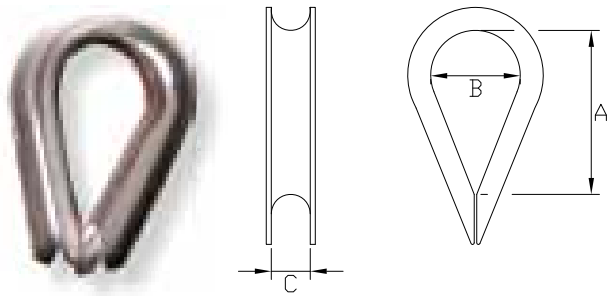
S.S. Chain type genovese, DIN 5685/A, AISI 304.



RIF. ART.	TIPO TYPE	Ø	KG/mt	A	B	MT.
7902	genovese A2	2	0,08	4,5	14,5	50
7903	genovese A2	3	0,17	7	19	50
7904	genovese A2	4	0,29	7	19	50
7905	genovese A2	5	0,47	9	21	50
7906	genovese A2	6	0,67	9	24	50
7908	genovese A2	8	1,25	14	32	25

Redance normali, AISI 316.

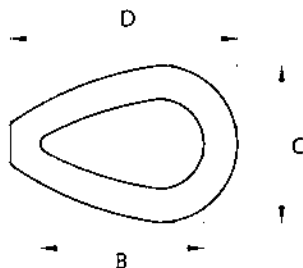
Standard thimbles, AISI 316.



RIF. ART.	FUNE WIRE	A	B	C	RIF. ART.	FUNE WIRE	A	B	C
4132	3	17	10	5	4139	12	55	32	18
4133	4	18	11	6	4140	14	56	34	20
4134	5	21	13	8	4141	16	62	36	22
4135	6	25	14	9	4142	18	62	43	27
4137	8	35	18	12	4143	20	90	48	31
4138	10	43	24	14,5	4144	22	115	28	62
					4145	24	125	34	65

Redance chiuse e spessorate, inox.

S.S. closed and heavy thimbles.



RIF. ART.	FUNE WIRE	B	C	D
4136-CH	6	28	32	43
4137-CH	8	43	41	58
4138-CH	10	50	45	67
4139-CH	12	60	60	85
4141-CH	16	81	74	109
4143-CH	19	95	90	125
4144-CH	22	100	97	130

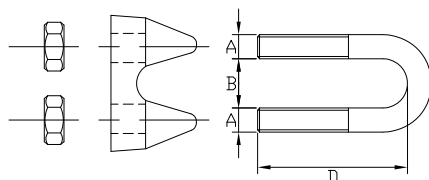
Redance pesanti UNAV 4391.2 e redance piene a richiesta.

Heavy thimbles UNAV 4391.2 and full thimbles on request.



Morsetti a cavallotto per cavi, AISI 316.

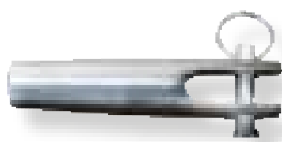
Wire rope clips, AISI 316.



RIF. ART.	FUNE WIRE	A	B	D
5168/A	4	4	7	18,5
5168/B	5	5	7	24
5168	6	6	9	28
5169	8	6	10,5	32
5170	10	8	11,5	38
5171	12	10	16	48

Terminali femmina e maschio per cavo "PARAFIL", inox.

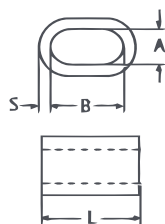
Eye and fork terminals for "PARAFIL", on stainless steel.



RIF. FEMMINA - FORK	RIF. MASCHIO - EYE	FUNE WIRE
2807	2907	7
2809	2908	9
2811	2911	11

Manicotti di rame "TALURIT"

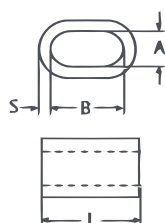
Copper ferrules DIN 3093



ART. RAME COPPER	GRD SIZE	ART. RAME COPPER	GRD SIZE
5802	2	5808	8
5803	3	5810	10
5804	4	5812	12
5805	5	5814	14
5806	6	5816	16
5807	7	5818	18

Manicotti di acciaio inox "TALURIT"

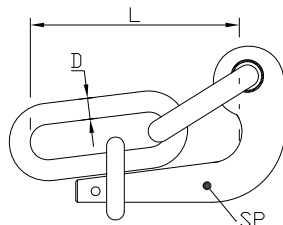
AISI 316 ferrules DIN 3093



ART. INOX AISI	GRD SIZE	ART. INOX AISI	GRD SIZE
5802-X	2	5808-X	8
5803-X	3	5810-X	10
5804-X	4	5812-X	12
5805-X	5	5814-X	14
5806-X	6	5816-X	16
5807-X	7	5818-X	18

Gancio a scocco, UNI 2503, AISI 316.

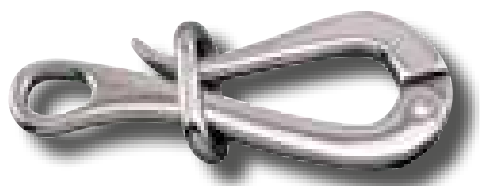
Slip hooks, UNI 2503, AISI 316.



RIF. ART.	D	SP	L
3510	6	6	60
3511	8	8	80
3512	10	10	100
3513	12	12	120
3514	16	16	180

Gancio a pellicano per draglie in acciaio inox

Pelikan hook for lifelines



RIF. ART.	GRD SIZE	L	D
4231	3/4	100	18
4233	5/6	150	22

Gancio ad occhio STAMPATO, con sicura, inox A4

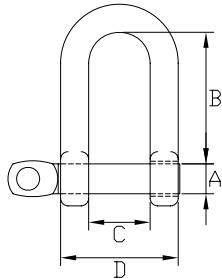
Eye hook, FORGED, with safety latch, A4



RIF. ART.	PORTATA W.L.L.	b	g	h	t	PESO/Kg. Weight/Kg.
cromox 606	kg. 900	25	25	22	100	0,40
cromox 608	kg. 1.500	27	32	28	126	0,80
cromox 610	kg. 2.400	37	39	34	160	1,40
cromox 613	kg. 3.800	48	51	45	190	3,00
cromox 616	kg. 5.000	55	66	51	230	4,80

Grillo corto, UNI 1947-48, Stampato, AISI 316.

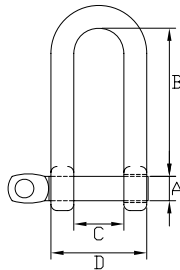
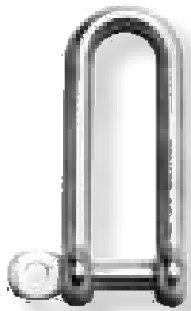
Short shackles, UNI 1947-48, Forged, AISI 316.



RIF. ART.	A	B	C	D	MBL Kg	WLL Kg
3082	5	14	7	14	-	-
3083	6	17	8	16	1.400	200
3084	8	26	12	24	2.900	400
3085	10	33	16	32	4.900	700
3086	12	42	20	40	7.000	1.000
3087	14	46	22	46	9.000	1.250
3088	16	50	24	50	10.500	1.500
3089	18	54	26	58	14.000	2.000
3090	20	58	28	62	17.500	2.500
3091	22	69	32	68	21.000	3.000
3092	24	80	36	78	25.000	3.500
3093	28	90	40	88	28.000	4.000
3094	32	100	45	100	32.000	4.500

Grillo lungo, Stampato, AISI 316.

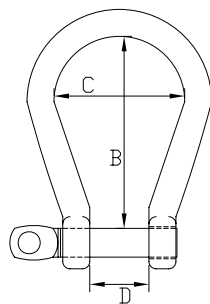
Long shackles, Forged, AISI 316.



RIF. ART.	A	B	C	D	RIF. ART.	A	B	C	D
3096	5	38	10	20	3103	18	81	36	72
3097	6	44	12	24	3104	20	90	40	80
3098	8	59	16	32	3105	22	99	45	83
3099	10	45	20	40	3106	24	108	50	98
3100	12	51	24	47	3107	28	126	56	112
3101	14	62	29	57	3108	30	135	62	122
3102	16	72	33	65	3109	32	144	68	132

Grillo ad omega, UNI 1950, Stampato, AISI 316.

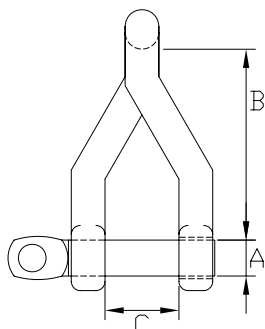
Bow shackles, UNI 1950, Forged, AISI 316.



RIF. ART.	A	B	C	D	RIF. ART.	A	B	C	D
3111	5	23	18	10	3117	16	83	60	32
3112	6	25	20	12	3118	18	94	68	36
3113	8	34	25	16	3119	20	104	75	40
3114	10	47	40	20	3120	22	115	82	44
3115	12	52	44	24	3121	24	125	90	48
3116	14	73	52	28	3122	28	130	95	50

Grillo ritorto a 90°, UNI 1950, AISI 316.

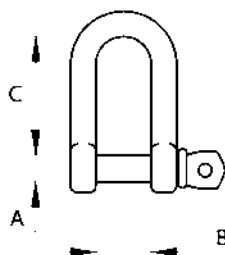
90° twisted shackles, Forged, AISI 316.



RIF. ART.	A	B	C
3123	5	27	10
3124	6	35	12
3125	8	41	16
3126	10	52	20
3127	12	55	24
3128	14	63	28
3129	16	72	32

Grilli dritti tipo economico, AISI 316

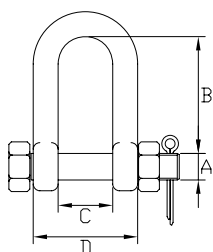
AISI 316 straight economic shackle



RIF. ART.	A	B	C	-
8151	5	10	15	-
8152	6	12	21	-
8153	8	16	28	-
8154	10	20	35	-
8155	12	24	44	-
8156	13	26	46	-
8157	16	32	55	-
8159	19	35	66	-
8161	22	44	74	-
8163	24	50	85	-

Grilli DRITTI con perno di sicurezza, dado + copiglia, stampati, AISI 316

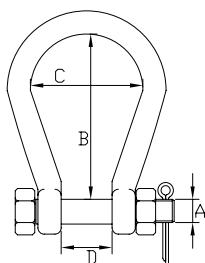
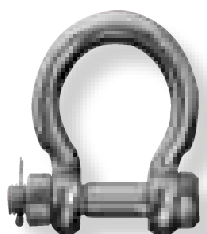
Straight shackle with SAFETY PIN, NUT + SPLIT PIN, FORGED, AISI 316



DRITTI/STRAIGHT ART.	A	B	C	D	CAR. ROTT. B. LOAD
3085-SICU	10	35	20	38	kg. 3.260
3086-SICU	12	42	20	40	kg. 4.700
3088-SICU	16	50	24	52	kg. 8.350
3089-SICU	18	54	26	58	kg. 10.300
3090-SICU	20	58	28	64	kg. 13.100

Grilli ad omega con perno di sicurezza, dado + copiglia, STAMPATI, AISI 316

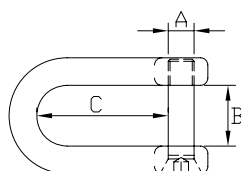
BOW SHACKLE WITH SAFETY PIN, NUT + SPLIT IN, FORGED, AISI 316



RIF. ART.	A	B	C	D	CAR. ROTT. B. LOAD
3114-SICU	10	47	40	20	kg. 3.260
3115-SICU	12	52	44	24	kg. 4.700
3117-SICU	16	83	60	32	kg. 8.350
3118-SICU	18	94	68	36	kg. 10.300
3119-SICU	20	104	75	40	kg. 13.100

Grilli dritti con perno con testa svasata E.I., AISI 316

D-Shackle with socket head pin, AISI 316



RIF. ART.	A	B	C
8171	6	12	21
8172	8	16	33
8173	10	21	39
8174	12	24	42

Grillo ad omega con perno testa svasata esagono incassato AISI 316

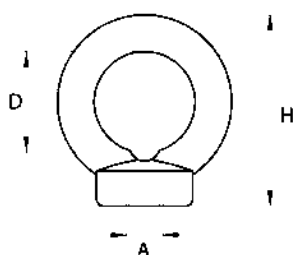
Bow shackle with hexagon socket, AISI 316



RIF. ART.	dia.	A	L	E	MBL
8165	6	12	30	21	1700
8166	8	16	44	28	2500
8167	10	21	49	34	4300
8168	12	25	57	42	5900
8169	16	31	80	56	7000

Golfari femmina simili a DIN 582, AISI 316, di FUSIONE

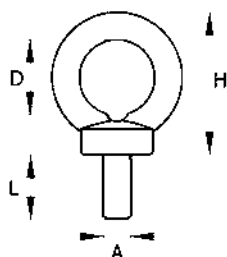
Lifting eye nuts similar to DIN 582, AISI 316, CASTED



AISI 316	AISI 304	A	D	H
8106-FSA4	8106-FSA2	M6	16	27
8108-FSA4	8108-FSA2	M8	20	36
8110-FSA4	8110-FSA2	M10	24	45
8112-FSA4	8112-FSA2	M12	29	54
8116-FSA4	8116-FSA2	M16	34	63
8120-FSA4	8120-FSA2	M20	39	72

Golfari maschi similar to DIN 580, AISI 316, di FUSIONE

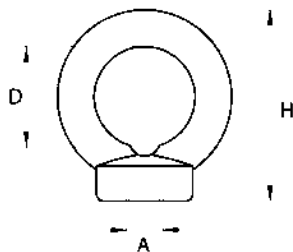
Lifting eye bolts similar to DIN 580, AISI 316, CASTED



AISI 316	AISI 304	A	D	H	L
4171-FSA4	4171-FSA2	M6	16	27	13
4172-FSA4	8172-FSA2	M8	20	36	14
4173-FSA4	4173-FSA2	M10	24	45	16
4174-FSA4	4174-FSA2	M12	29	54	21
4175-FSA4	4175-FSA2	M16	34	63	27
4176-FSA4	4176-FSA2	M20	39	72	30

Golfari femmina simili a DIN 582, AISI 316, FORGIATI

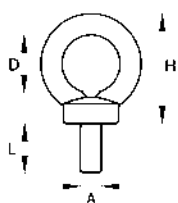
Lifting eye nuts similar to DIN 582, AISI 316, FORGED



AISI 316	AISI 304	A	D	H	WLL kg
8108-STA4	8108-STA2	M8	20	36	200
8110-STA4	8110-STA2	M10	24	45	400
8112-STA4	8112-STA2	M12	29	54	600
8116-STA4	8116-STA2	M16	34	63	1.200
8120-STA4	8120-STA2	M20	39	72	2.000
8124-STA4	8124-STA2	M24	50	90	2.700

Golfari maschi similar to DIN 580, AISI 316, FORGIATI

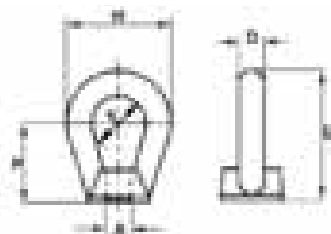
Lifting eye bolts similar to DIN 580, AISI 316, FORGED



AISI 316	AISI 304	A	D	H	L	WLL kg
4172-STA4	8172-STA2	M8	20	36	14	200
4173-STA4	4173-STA2	M10	24	45	16	400
4174-STA4	4174-STA2	M12	29	54	21	600
4175-STA4	4175-STA2	M16	34	63	27	1.200
4176-STA4	4176-STA2	M20	39	72	30	2.000
4178-STA4	4178-STA2	M24	50	90	36	2.700

Golfari femmina occhio allungato UNI 2948

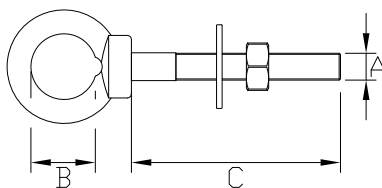
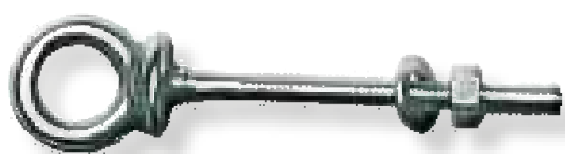
Elongated eye nut - type UNI 2948



RIF. ART.	A	H	F	L	D
4190	M10	44	24	58	10
4192	M12	56	30	72	13
4196	M16	68	36	86	16
4199	M20	80	42	100	19
4200	M24	94	50	119	22

Golfare maschio lungo, Inox.

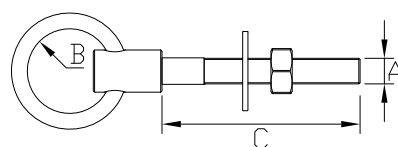
Eye Bolt, long type, on stainless steel.



RIF. ART.	A	B	C
4154	6	15	60
4155	8	19	80
4156	10	25	100
4157	12	30	120

Golfare con anello libero, Inox.

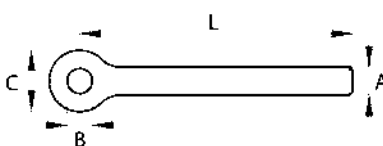
Eye Bolts with free ring, on stainless steel.



RIF. ART.	A	B	C
4158	6	30	60
4159	8	40	80
4160	10	50	100
4161	12	60	120

Tiranti ad occhio stampati, AISI 316.

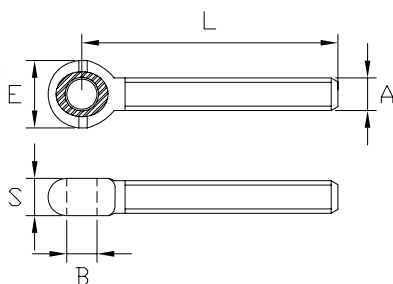
AISI 316 eye bolt forged.



RIF. ART.	A	B	C	L
8340	M10	9	22	100
8342	M12	12	29	120
8346	M16	16	32	160
8348	M20	20	45	200

Tiranti ad occhio tipo DIN 444, AISI 316.

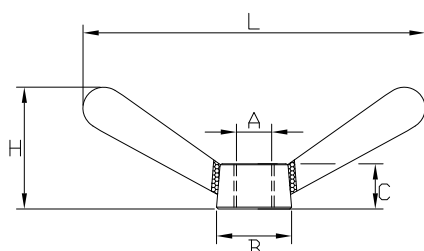
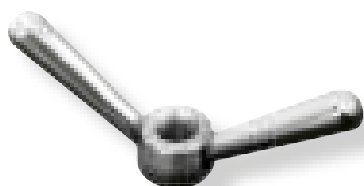
AISI 316 eye bolt DIN 444 type.



RIF. ART.	FILETTO THREAD	B	E	S	L
4510	M10	8	20	12	80
4512	M12	10	24	14	100
4514	M14	12	28	16	110
4516	M16	14	32	18	125
4520	M20	18	39	22	130
4524	M24	20	46	26	190

Dadi a corna tipo UNI 2402, AISI 316.

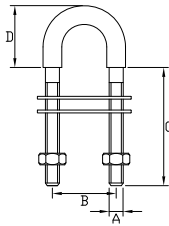
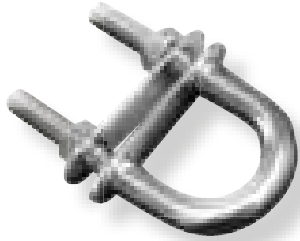
AISI 316 lever nuts UNI 2402.



RIF. ART.	A	B	C	H	L
4610	M10	20	10	39	90
4612	M12	24	12	45	105
4614	M14	28	16	51	116
4616	M16	30	18	58	133
4620	M20	35	21	68	153
4624	M24	41	30	88	204

Cavalotto con piastrine, AISI 316.

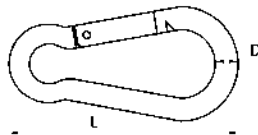
"U" bolt, AISI 316.



RIF. ART.	A	B	C	D
5172	6	20	60	32
5173	8	38	63	32
5174	10	52	75	52
5175	12	62	85	62

Moschettoni a pera strozzata, AISI 316.

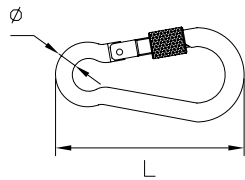
AISI 316 spring hook.



RIF. ART.	D	L	RIF. ART.	D	L
8281	5	50	8284	8	80
8282	6	60	8285	10	100
8283	7	70	8286	11	120

Moschettone a pera strozzata, con ghiera di sicurezza

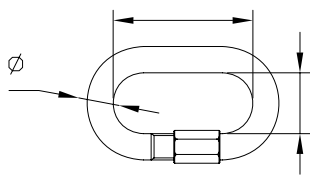
Carbine hooks with threaded locking sleeve



RIF. ART.	FILO ROD	LUNGHEZZA LENGHT	PASSAGGIO ENTRANCE	PESO WEIGHT
8243	Ø 8	80	11	Kg. 0,01
8244	Ø 10	100	13	Kg. 0,02
8245	Ø 11	110	15	Kg. 0,03

Maglia rapida, con ghiera esagonale, AISI 316

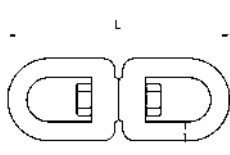
Quick link, AISI 316



RIF. ART.	FILO ROD	LUNGHEZZA INT. INSIDE LENGHT	LARGHEZZA INT. INSIDE LARGE	PASSAGGIO ENTRANCE
8308	Ø 8	60	18	11
8310	Ø 10	71	22	12
8312	Ø 11	81	24	14,5

Girelle a due occhi, inox

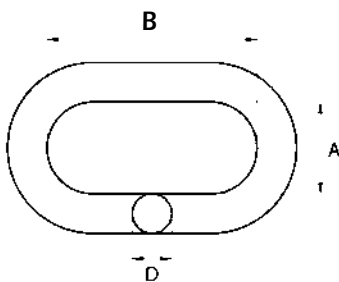
S.S. eye / eye swivel.



RIF. ART.	D	L	RIF. ART.	D	L
8292	5	60	8295	10	116
8293	6	66	8297	12	150
8294	8	90	8299	16	190

Campanelle in acciaio inox, AISI 316.

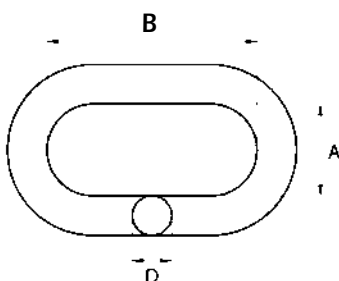
AISI 316 oval ring.



RIF. ART.	D	A	B	WLL kg
8251	10	60	100	400
8253	12	60	100	600
8255	14	65	110	900
8257	16	75	125	1.200
8258	18	70	120	1.700
8259	20	90	160	2.000
8260	22	90	160	2.500
8261	25	100	180	3.000

Campanelle in acciaio, INOX HR.

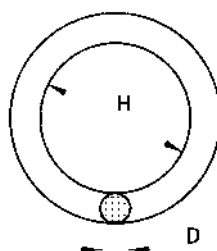
INOX HR oval ring.



RIF. ART.	D	A	B	WLL kg
8251-W	10	50	80	600
8254-W	13	60	110	1.500
8257-W	16	60	110	2.400
8258-W	18	75	135	3.300
8260-W	22	90	160	5.600
8262-W	26	100	180	7.500
8262-W32	32	110	200	12.000
8262-W36	36	140	260	15.000

Anelli tondi INOX

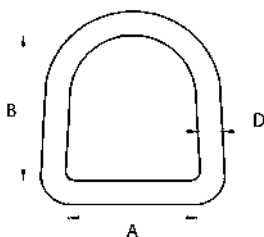
Round ring - INOX



RIF. ART.	D	H	RIF. ART.	D	H
8201	5	25	8215	10	50
8203	5	30	8216	10	60
8205	6	2	8219	12	80
8206	6	30	8222	14	120
8208	6	40	8225	16	140
8210	8	30	8227	18	160
8211	8	35	8229	20	190
8212	8	40	8231	22	240

Anelli a "D", AISI 316

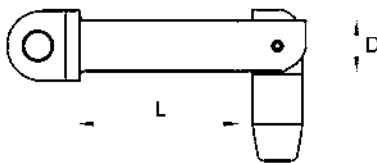
AISI 316 "D" ring



RIF. ART.	D	A	B
8265	10	40	60
8268	12	50	75
8271	14	75	85
8273	16	85	95

Perno a snodo UNAV 4255.1, AISI 316.

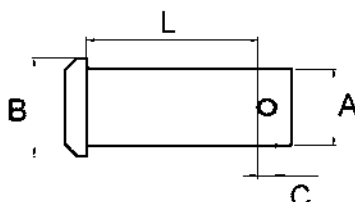
Toggle pin with eye head, UNAV 4255.1, AISI 316.



RIF. ART.	D	L
4706	6	30
4708	8	40
4710	10	50
4712	12	60
4716	16	70
4720	20	80

Perno per forcelle, AISI 316

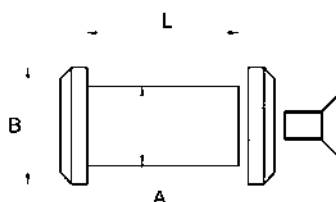
Pin for fork, AISI 316



RIF. ART.	A	B	L Corti	C
8505	5	7	13,5	2
8506	6	8	14,5	2
8508	8	10	16,5	3
8510	10	12	20	4
8512	12	14	26	4
8514	14	16	30	4
8516	16	18	32	4
8520	19	20	33	4

Perno con vite e rondella svasata, AISI 316

Pin with cone head bolt cone washer, AISI 316



RIF. ART.	A	B	L	-
8512-VS	12	16	27	-
8516-VS	16	20	35	-
8520-VS	19	26	40	-
8522-VS	22	30	45	-
8524-VS	24	32	51	-

Forcelle fresate con perno non sporgente

Hexagon socket button pin



Soluzione opzionale per ringhiere e scale

Perno non sporgente, c/testa con esagono incassato
Aggiungere al numero di articolo il suffisso : **-EI**

Optional solution for balustrades and stairs

Hexagon socket button pin, without head
To add the suffix to the article number. : **- EI**

Articoli vari a disegno - inox e titanio

Differents items on design - stainless steel, titanium.

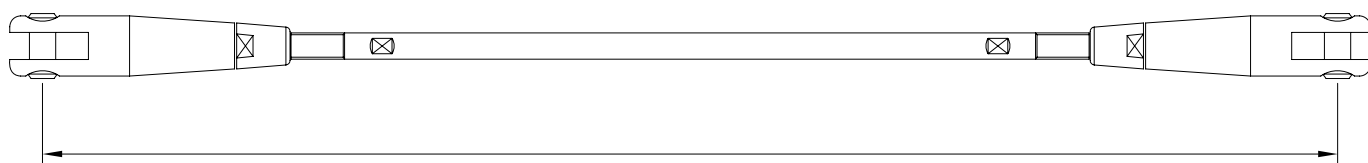




SISTEMI DI TIRANTI IN TONDINO

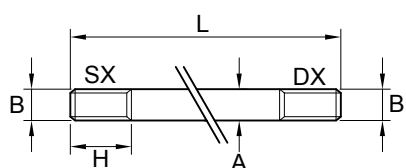
ROD STAY SYSTEMS





Asta di tondino pieno, filettata alle estremità, AISI 316

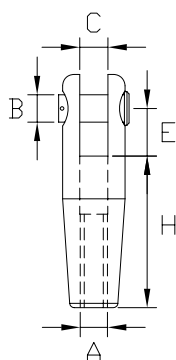
Rod stud, threaded right/left, AISI 316



RIF. ART.	A	B	C	H	L MAX	MBL Kg
7408	8	M8 sx	M8 dx	45	4000	2.150
7410	10	M10 sx	M10 dx	55	4000	3.450
7412	12	M12 sx	M12 dx	75	4000	5.000
7414	14	M14 sx	M14 dx	85	4000	6.900
7416	16	M16 sx	M16 dx	95	4000	8.900
7418	18	M18 sx	M18 dx	105	4000	10.900
7420	20	M20 sx	M20 dx	115	4000	13.900
7424	24	M24 sx	M24 dx	125	3000	19.800

Forcella fresata filettata femmina, tipo lungo, con perno + anellino, AISI 316

Inside thread fork, long type, with pin + split pin, AISI 316.



RIF. ART.	RIF. ART.	A	B	C	E	H
7378-DX	7378-SX	M8	6	7	13	40
7380-DX	7380-SX	M10	8	8	16	46
7382-DX	7382-SX	M12	10	10	18	58
7384-DX	7384-SX	M14	12	12	20	68
7386-DX	7386-SX	M16	12	12	23	78
7388-DX	7388-SX	M18	14	14	31	90
7390-DX	7390-SX	M20	18	18	32	98
7394-DX	7394-SX	M24	24	20	42	126

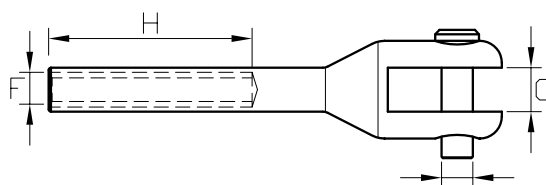
A richiesta=Perno con rondelle svasate (-SV)
On Request=Pin with cone washers (-SV)

Forcella fresata filettata femmina, standard, AISI 316

Medium inside threaded fork, AISI 316.

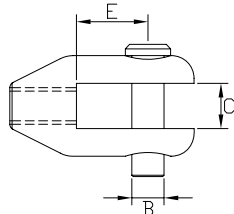


RIF. ART.RIGHT	RIF. ART.LEFT	FILETTO THREAD	GRD SIZE	B PIN	C	H
7366-DX	7366-SX	M6	3	5	6	28
7368-DX	7368-SX	M8	5	8	8	40
7370-DX	7370-SX	M10	6	10	10	46
7372-DX	7372-SX	M12	7	12	12	58
7374-DX	7374-SX	M16	10	14	14	78



Forcella fresata filettata internamente, AISI 316

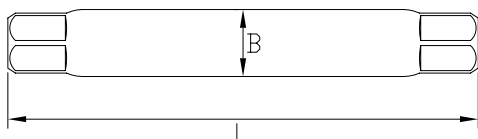
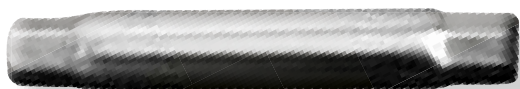
Inside thread fork terminal, AISI 316.



RIF. ART.	FILETTO THREAD	B PIN	C WIDTH	E DEPTH	GRD
7350	M5	4	5	8	2,5
7351	M6	5	6	10	3
7352	M8	6	8	12	4
7353	M10	8	8	14	5
7354	M12	10	10	18	6

Canaula standard inox AISI 316

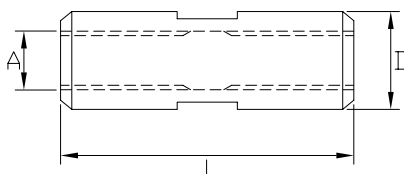
AISI 316 standard closed body.



RIF. ART.	FILETTO THREAD	B DIAM	L LENGTH
7065	M5	9	60
7066	M6	9,5	71
7068	M8	13	92
7070	M10	16,5	105
7072	M12	21	128
7074	M14	22	145
7076	M16	25	165
7078	M18	28	190
7080	M20	30	215

Cilindro filettato DX/SX di congiunzione, AISI 316

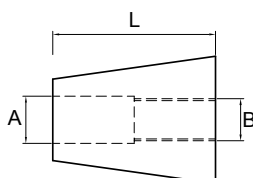
Short body right/left AISI 316 (without Adjustment)



RIF. ART.	A	D	L	-
7334	M10	16	50	-
7335	M12	20	60	-
7337	M16	25	75	-
7339	M20	30	90	-

Dadi conici per forcelle lunghe, AISI 316

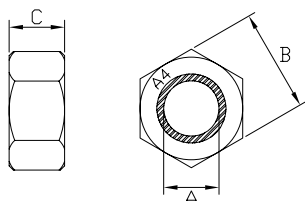
Conical nut, for long fork, AISI 316



RIF. ART.	A	B	L	-
7380 - CN	11	M10	18	-
7382 - CN	13	M12	24	-
7386 - CN	17	M16	26	-
7390 - CN	21	M20	29	-

Dadi esagonali ribassati, AISI 316

Exagonal nut, small type AISI 316



DESTRO RIGHT	SINISTRO LEFT	FILETTO THREAD	B	C
8632-DX	8632-SX	M8	10	5
8633-DX	8633-SX	M10	13	6,5
8634-DX	8634-SX	M12	17	8
8636-DX	8636-SX	M16	22	11
8639-DX	8639-SX	M20	27	15





**ACCESSORI
LINEA VITA**

***SAFETY LINE
FITTINGS***



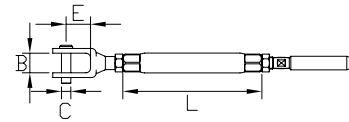
Tenditore inox forcella tranciata fissa/pressare

Dome head stuck fork/swage turnbuckle.



ART.	FUNE WIRE	A	B	C	E	L	C. ROTT. B. LOAD
------	-----------	---	---	---	---	---	------------------

1082 - 150	d.8 (7x7)	M12	15,5	12	23	150	KN. 60
------------	-----------	-----	------	----	----	-----	--------



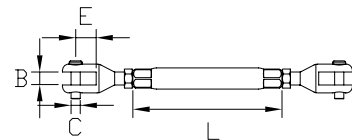
Tenditore inox a due forcelle tranciate fisse.

Two dome head stuck fork turnbuckle.



ART.	FUNE WIRE	A	B	C	E	L	C. ROTT. B. LOAD
------	-----------	---	---	---	---	---	------------------

1072 - 150	d.8 (7x7)	M12	15,5	12	23	150	KN. 60
------------	-----------	-----	------	----	----	-----	--------



Tenditore inox forcella tranciata/manuale conico "EASY"

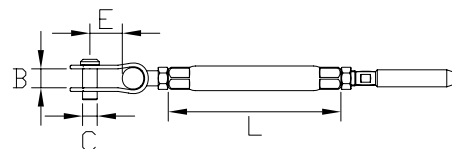
Fork/swageless turnbuckle "EASY" type



ART.	FUNE WIRE	A	B	C	E	L	C. ROTT. B. LOAD
------	-----------	---	---	---	---	---	------------------

1092 - 150	8 (7x7)	M12	15,5	12	23	150	KN. 45
------------	---------	-----	------	----	----	-----	--------

1094 - 150	10 (7x7)	M16	17,5	14	26	175	KN. 55
------------	----------	-----	------	----	----	-----	--------



Tenditore inox a due forcelle snodate

Two toggle fork turnbuckle.



ART.	FUNE WIRE	A	B	C	E	L	C. ROTT. B. LOAD
------	-----------	---	---	---	---	---	------------------

1512 - 250	8 (7x7)	MB12	16	12	23	250	KN. 60
------------	---------	------	----	----	----	-----	--------

1512 - 150	8 (7x7)	M12	16	12	23	150	KN. 55
------------	---------	-----	----	----	----	-----	--------

Tenditore inox con indicatore di tensione

Two toggle fork turnbuckle, with force applied indicator



ART.	FUNE WIRE	A thread	B pin	C depth	H body	MBL Kn
------	-----------	----------	-------	---------	--------	--------

1100-150FF	8 (7x7)	M12	12	23	150	58
------------	---------	-----	----	----	-----	----

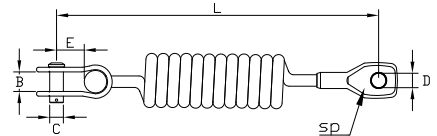
1101-150FF	8 (7x7)	M14	12	27	150	62
------------	---------	-----	----	----	-----	----

Molla parastrappi per linea vita, in acciaio inox
Shock absorber for safety line, on stainless steel



ART.	FUNE WIRE	B	C	D	E	L	SP
MOL10-LV-OF	8 (7x7)	16	12	12,5	26	265	11

CARICO DI ROTTURA / BREAKING LOAD = Kg. 3.900



Morsetti a cilindro doppio per redance
Double wire rope clamp for thimbles



ART.	FUNE	VALIDIO PER FUNI	NR. VITI	CAR. ROT. - B.L.
7516	d. 6	7x7 e 7x19	4	KN 21,5
7518	d. 8	7x7 e 7x19	4	KN 39,5

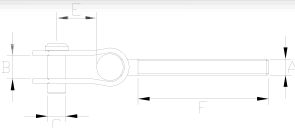


Terminale filettato extralungo, AISI 316
Thread terminal, long type, AISI 316



RIF. ART.	FUNE WIRE	A	D	F
2104 - 08-150	Ø 8 (7x7)	M12	16	150
2104 - 08-250	Ø 8 (7x7)	M12	16	250
2105 - 08-250	Ø 8 (1x19)	M14	16	250
2106 - 08-250	Ø 8 (1x15)	M16	16	250

Forcella snodata filettata extralunga, AISI 316
Threaded toggle, long type, AISI 316



RIF. ART.	A	B	C	E	F
2407 - 150M12	M12	16	12	23	150
2407 - 250M12	M12	16	12	23	250
2408 - 150M16	M16	17	12	27	150
2408 - 250M12	M16	17	12	27	250

Mollone parastrappi per linea vita, inox
Spring for safety line.

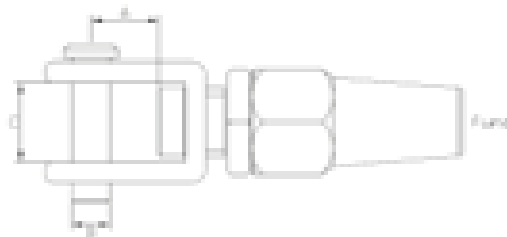


RIF. ART.	FUNE WIRE	FILO ROD	D	L	PESO WEIGHT
MOL-0250	diam. 8 (7x19)	8	65	480	Kg. 2,5
MOL-0300	diam. 8 (7x7)	10	80	560	Kg. 3
MOL-0400	diam. 8 (1x19)	12	100	560	Kg. 3,5

TERMINALI MANUALI CONICI TIPO "EASY" "EASY" TYPE SWAGELESS TERMINALS

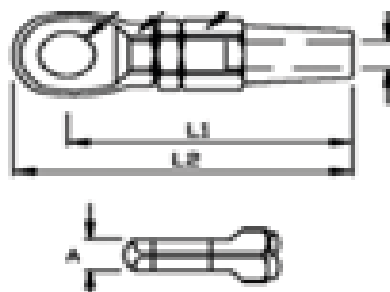
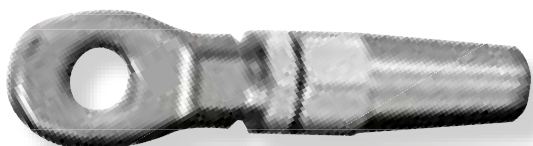


Terminale manuale "EASY" a forcella tranciata per linea vita *Safety line "EASY" fork swageless terminal*



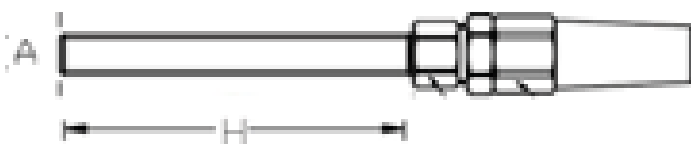
ART.	FUNE	VALIDIO PER FUNI	A - depth	B - pin	C - width
2607-EASY-LV	d. 8	7x7 e 7x19	23	12	15,5

Terminale manuale "EASY" ad occhio *"EASY" eye swageless terminal*



ART.	FUNE	VALIDIO PER FUNI	B - hole	A - thick	L2
-EASY	d. 4	7x7 e 7x19	8	6,5	67
2505-EASY	d. 5	7x7 e 7x19	10	8	80
2506-EASY	d. 6	7x7 e 7x19	12	9	95
2508-EASYLV	d. 8	7x7 e 7x19	12,5	10,5	115

Terminale manuale "EASY" filettato maschio *"EASY" Swageless Stud Threaded Terminal*



ART.	FUNE	VALIDIO PER FUNI	A	H	L
2554-EASY	d. 4	7x7 e 7x19	M8	43	100
2555-EASY	d. 5	7x7 e 7x19	M10	54	117
2556-EASY	d. 6	7x7 e 7x19	M12	65	145
2558-EASY-LV	d. 8	7x7 e 7x19	M12	85	185
2558-EASY	d. 8	7x7 e 7x19	M16	82	185



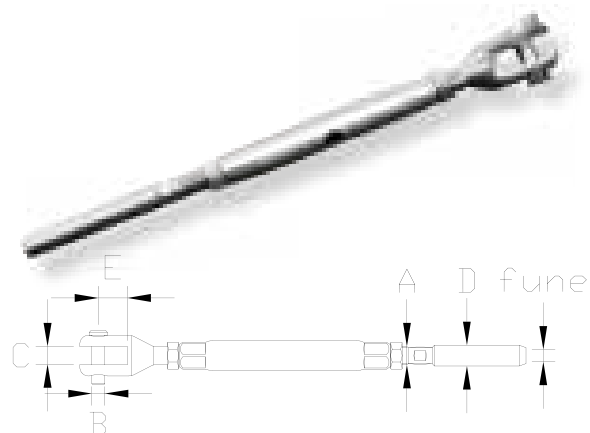
**ARCHITETTURA D'INTERNI
RINGHIERE E DRAGLIE**

*INTERIORS ARCHITECTURE
BALUSTRADES / STAIRS*



Tenditori forcella fresata/pressare "RIBASSATI" AISI 316

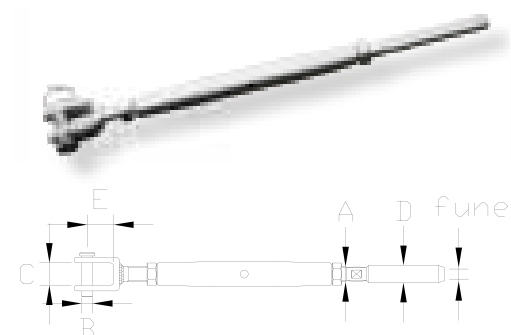
Fork/swage "SMALL TYPE" turnbuckles AISI 316.



RIF. ART.	FUNE WIRE	A THREAD	GRD SIZE	B PIN	C WIDTH	D DIAM	E DEPTH
7005-06	3	M5	2,5	4	5	6	8
7005-07	3	M5	2,5	4	5	6,3	8
7006-06	4	M6	3	5	6	6	10
7006-07	4	M6	3	5	6	6,3	10
7006-09	4	M6	3	5	6	9	10
7006-09EX	5	M6	3	5	6	9	10
7006-EXEX	6	M6	3	5	6	9	10
7008-08	5	M8	4	6	8	8	12
7008-09	5	M8	4	6	8	9	12
7008-09EX	6	M8	4	6	8	9	12
7010-09	6	M10	5	8	8	9	14
7010-10	6	M10	5	8	8	10	14
7012-12	8	M12	6	10	10	12	18
7012-13	8	M12	6	10	10	12,5	18
7014-16EX	10	M14	7	12	12	16	21

Tenditori forcella saldata/pressare "RIBASSATI"

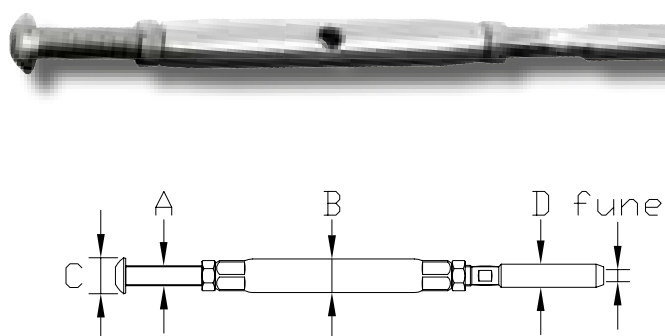
Welded fork/swage "SMALL TYPE" turnbuckles AISI 316.



RIF. ART.	FUNE WIRE	A THREAD	GRD SIZE	B PIN	C WIDTH	D DIAM	L CLOSED
7025	3	M5	2,5	5	7	5,5	110
7026	4	M6	3	6	8	6,3	125
7028	5	M8	4	8	11	7,5	150
7030	6	M10	5	10	13	9	175
7032	8	M12	6	12	15	12,5	275

Tenditori a testa a battente/pressare "RIBASSATI" AISI 316

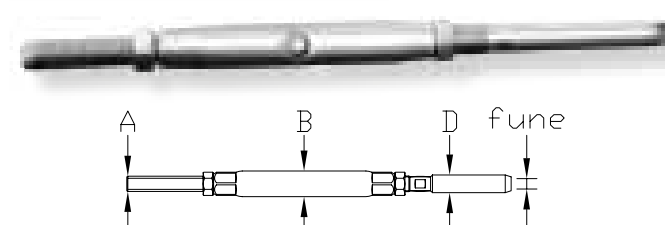
Dome head/swage "SMALL TYPE" turnbuckles AISI 316.



RIF. ART.	FUNE WIRE	A THREAD	GRD SIZE	B BODY	C HEAD	D DIAM
7035-07	3	M5	2,5	8	9	6,3
7037-06	4	M6	3	9	10	6
7037-07	4	M6	3	9	10	6,3
7037-09EX	4	M6	3	9	10	9
7037-XX05	5	M6	3	9	10	9
7037-EXEX	6	M6	3	9	10	9
7038-07	5	M8	4	12	14	7,5
7038-08	5	M8	4	12	14	8
7038-09	5	M8	4	12	14	9
7038-09EX	6	M8	4	12	14	9
7039-09	6	M10	5	16	17	9
7039-10	6	M10	5	16	17	10
7039-13EX	8	M10	5	16	17	12,5
7040-12	8	M12	6	20	18,5	12
7040-13	8	M12	6	20	18,5	12,5

Tenditori asta filettata/pressare "RIBASSATI", AISI 316

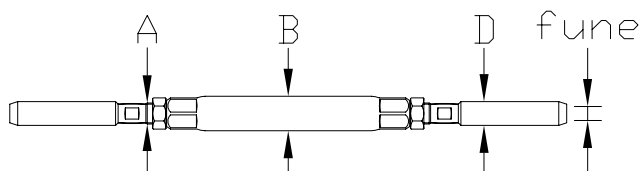
Thread/swage "SMALL TYPE" turnbuckles AISI 316.



RIF. ART.	FUNE WIRE	A THREAD	GRD SIZE	B BODY	D DIAM
7059-06	3	M5	2,5	8	6
7059-07	3	M5	2,5	8	6,3
7060-06	4	M6	3	9	6
7060-07	4	M6	3	9	6,3
7061-08	5	M8	4	12	8
7061-09	5	M8	4	12	9
7062-09	6	M10	5	16	9
7062-10	6	M10	5	16	10

Tenditori pressare/pressare, AISI 316

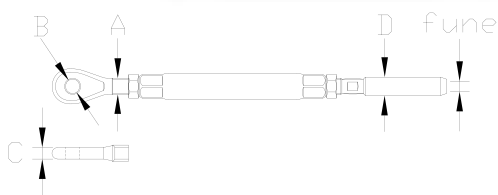
Swage/swage turnbuckles AISI 316.



RIF. ART.	FUNE WIRE	A THREAD	GRD SIZE	B BODY	D DIAM
7054-0306	3	M6	3	9	6
7054-0307	3	M6	3	9	6,3
7054-0406	4	M6	3	9	6
7054-0407	4	M6	3	9	6,3
7055-0407	4	M8	4	12	7,5
7055-0408	4	M8	4	12	8
7055-0508	5	M8	4	12	8
7055-0509	5	M8	4	12	9
7056-0509	5	M10	5	16	9
7056-0510	5	M10	5	16	10
7056-0609	6	M10	5	16	9
7056-0610	6	M10	5	16	10

Tenditori occhio/pressare, AISI 316

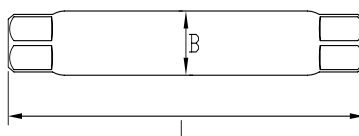
Eye/swage turnbuckles AISI 316.



RIF. ART.	FUNE WIRE	A THREAD	B HOLE	C THICK	D DIAM
7082-06	3	M6	5,5	4	6
7082-07	3	M6	5,5	4	6,3
7083-07	4	M6	5,5	4	6,3
7084-07	4	M8	6,5	5	7,5
7084-08	4	M8	6,5	5	8
7085-09	5	M8	6,5	5	9
7086-09	5	M10	8,5	7	9
7086-10	5	M10	8,5	7	10
7087-10	6	M10	8,5	7	10

Canaula standard inox AISI 316

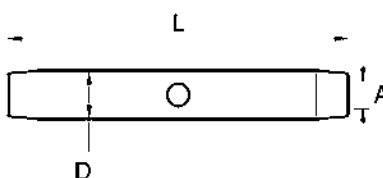
AISI 316 standard closed body.



RIF. ART.	FILETTO THREAD	B DIAM	L LENGTH
7065	M5	9	60
7066	M6	10	73
7068	M8	13	92
7070	M10	16,5	102
7072	M12	20	126
7074	M14	21,5	145
7076	M16	25,5	165
7078	M18	29	190
7080	M20	32	215

Canaula conica con foro, tipo corto, AISI 316

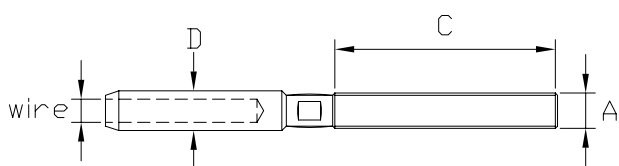
Short conical body with hole, AISI 316



RIF. ART.	A	D	L	-
7065 - CN	M5	8	55	-
7066 - CN	M6	9	64	-
7068 - CN	M8	12	79	-
7070 - CN	M10	14	89	-

Terminali filettati "RIBASSATI", AISI 316

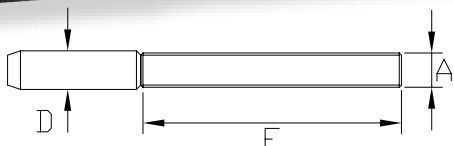
Thread "SMALL TYPE" terminal AISI 316.



ART. DESTRI/RIGHT	ART. SINISTRI/LEFT	FUNE WIRE	A THREAD	GRD SIZE	C THREAD	D DIAM
7132-06DX	7132-06SX	3	M5	2,5	35	6
7134-06DX	7134-06SX	4	M6	3	40	6
7134-07DX	7134-07SX	4	M6	3	40	6,3
7134-09DX	7134-09SX	4	M6	3	40	9
7134-EXDX	7134-EXSX	5	M6	3	40	9
7134-XXDX	7134-XXSX	6	M6	3	40	9
7135-08DX	7135-08SX	5	M8	4	50	8
7135-09DX	7135-09SX	5	M8	4	50	9
7135-EXDX	7135-EXSX	6	M8	4	50	9
7136-09DX	7136-09SX	6	M10	5	60	9
7136-10DX	7136-10SX	6	M10	5	60	10
7136-13DX	7136-13SX	8	M10	5	60	12,5
7137-12DX	7137-12SX	8	M12	6	70	12
7137-13DX	7137-13SX	8	M12	6	70	12,5
7138-16DX	7138-16SX	10	M14	7	80	16
7139-16DX	7139-16SX	10	M16	8	90	16

Terminale filettato ribassato, tipo lungo, AISI 316.

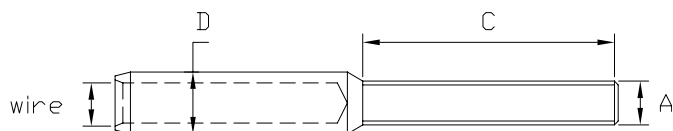
Threaded terminal, long type, AISI 316.



RIF. ART.	RIF. ART.	FUNE WIRE	A THREAD	GRD SIZE	D DIAM	F
7144 - L4DX	7144 - L4SX	d. 4	M6	3	7,5	60
7144 - L5DX	7144 - L5SX	d. 5	M6	3	7,5	60
7146 - L5DX	7146 - L5SX	d. 5	M8	4	9,0	60
7146 - L6DX	7146 - L6SX	d. 6	M8	4	9,0	60
7148 - L6DX	7148 - L6SX	d. 6	M10	5	12,5	80
7148 - L8DX	7148 - L8SX	d. 8	M10	5	12,5	80

Terminale filettato tipo corto, AISI 316.

Threaded terminal, short type, AISI 316.



ART. DESTRI/RIGHT	ART. SINISTRI/LEFT	FUNE WIRE	A THREAD	GRD SIZE	C THREAD	D DIAM
7144-06DX	7144-06SX	4	M6	3	30	6,0
7144-07DX	7144-07SX	4	M6	3	30	6,3
7144-08DX	7144-08SX	4	M6	3	30	7,5
7144-EXDX	7144-EXSX	5	M6	3	30	7,5
7144-XXDX	7144-XXSX	6	M6	3	30	9,0
7147-07DX	7147-07SX	5	M8	4	30	7,5
7147-08DX	7147-08SX	5	M8	4	30	8,0
7147-09DX	7147-09SX	5	M8	4	30	9,0
7147-EXDX	7147-EXSX	6	M8	4	30	9,0
7148-12DX	7148-12SX	8	M10	5	40	12
7148-13DX	7148-13SX	8	M10	5	40	12,5

Terminali filettati "Lineari", con diam. esterno dopo pressatura, simile al diam. della filettatura, AISI 316

"Same-Line" thread terminals, with the same external diam. of the thread after the swaged, AISI 316

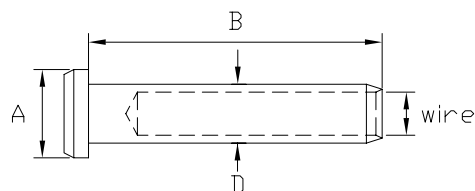


Validi solamente per fune tipo 7 X 7 e 7 X 19
Only valid for wire rope constr. 7 X 7 e 7 X 19

RIF. ART.	FUNE WIRE	A THREAD	B THREAD	D D. BEFORE
7141	5	M5	30	6,3
7142	6	M6	30	7,5
7143	8	M8	30	9,1

Terminali a testa battente, AISI 316

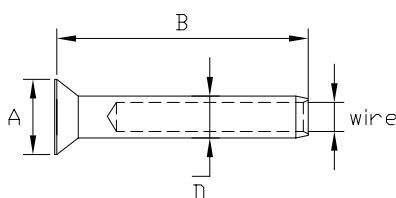
Dome head terminal, AISI 316.



RIF. ART.	FUNE WIRE	A HEAD	B STEM	D DIAM
7201-05EC	3	9	18	5,5
7201-06	3	9	23	6
7202-06	4	9	25	6,3
7202-07EC	4	11	25	6,3
7203-07EC	5	13	28	7,5
7203-07	5	12	33	7,5
7204-09	6	14	35	9
7205-12	8	18	50	12

Terminali a testa svasata, AISI 316

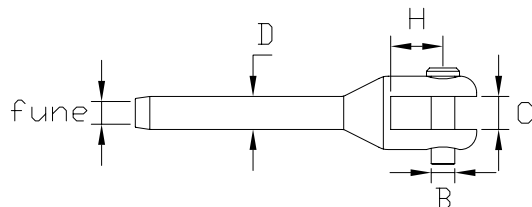
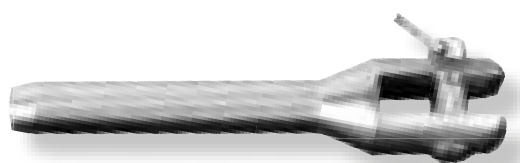
Cone head terminal, AISI 316.



RIF. ART.	FUNE WIRE	A HEAD	B LENGTH	D DIAM
7221-06	3	9	25	6
7221-07	3	9	25	6,3
7223-06	4	9	27	6
7223-07	4	9	27	6,3
7223-08EC	4	9,5	35	7,5
7224-07EC	5	9,5	35	7,5
7225-07	5	12	36	7,5
7227-09	6	14	38	9
7228-12	8	18	54	12

Terminali a forcella fresata "RIBASSATI", AISI 316

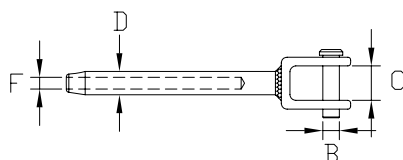
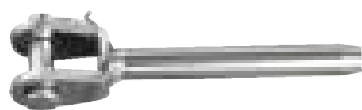
"SMALL TYPE" fork terminal AISI 316.



RIF. ART.	FUNE WIRE	GRD SIZE	B PIN	C WIDTH	D DIAM	H DEPTH
7112-07	3	2,5	5	6	6,3	8
7114-06	4	3	5	6	6	10
7114-07	4	3	5	6	6,3	10
7114-09	4	3	5	6	9	10
7114-09EX	5	3	5	6	9	10
7114-EXEX	6	3	5	6	9	10
7116-08	5	4	6	8	8	12
7116-09	5	4	6	8	9	12
7116-09EX	6	4	6	8	9	12
7117-09	6	5	8	8	9	14
7117-10	6	5	8	8	10	14
7117-12EX	8	5	8	8	12	14
7118-12	8	6	10	10	12	18
7118-13	8	6	10	10	12,5	18

Terminali a forcella saldata "RIBASSATI"

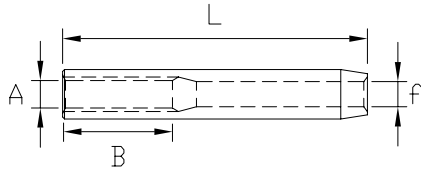
Welded "SMALL TYPE" fork terminal.



RIF. ART.	FUNE WIRE	GRD SIZE	B PIN	C WIDTH	D DIAM
7123	3	2,5	5	7	5,5
7124	4	3	6	8	6,3
7125	5	4	8	11,5	7,5
7126	6	5	10	13	9
7128	8	6	12	15	12,5

Terminali filettati femmina "RIBASSATI", AISI 316

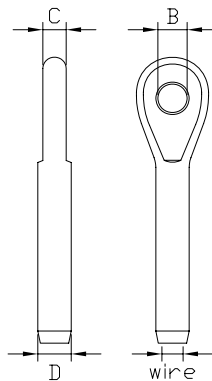
Inside thread "SMALL TYPE" terminal AISI 316.



RIF. ART.	FUNE WIRE	A THREAD	B DEPTH	D DIAM	L LENGTH
7150-07	3	M5	20	6,3	55
7151-07	4	M6	23	7,5	65
7152-09	5	M6	23	9	70
7153-12	6	M8	25	12	85
7153-13	6	M8	25	12,5	85
7154-14	8	M10	40	14	115
7155-16	8	M12	40	16	120

Terminali ad occhio "RIBASSATI", AISI 316

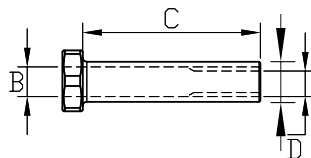
Eye "SMALL TYPE" terminal AISI 316.



RIF. ART.	FUNE WIRE	GRD SIZE	B PIN	C THICK	D DIAM
7159-06	3	2,5	5,5	4	6
7159-07	3	2,5	5,5	4	6,3
7160-06	4	3	5,5	4	6
7160-07	4	3	5,5	4	6,3
7160-09	4	3	5,5	4	9
7160-09EX	5	3	5,5	4	9
7160-EXEX	6	3	5,5	4	9
7161-07	5	4	6,5	6	7,5
7161-08	5	4	6,5	6	8
7162-09	6	5	8,5	7	9
7162-10	6	5	8,5	7	10

Tirante a testa a battente, filettato femmina, foro passante, AISI 316.

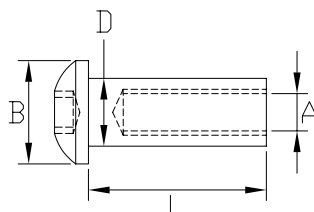
Dome head inside threaded (open hole), AISI 316.



RIF. ART.	FILETTO THREAD	B HOLE	C LENGHT	D DIAM
7320	M5	5,3	30	7
7321	M6	6,8	35	8
7322	M8	9,0	40	10,5

Tirante a testa a battente filettato femmina, esagono incassato

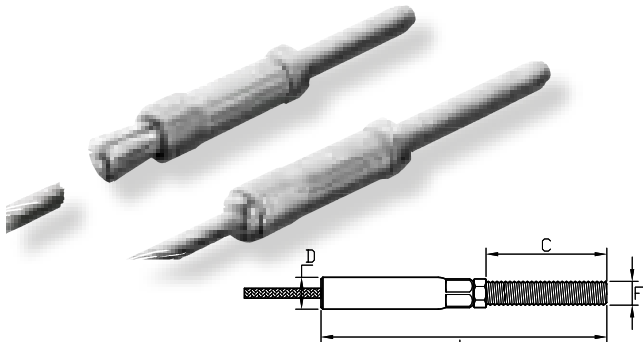
Dome case nut with internal thread and hexagon socket, right



RIF. ART.	A	B	D	L
7323	M5	10	8	21
7324	M6	12	8	26
7326	M8	16	12	30
7328	M10	18	14	34

Terminali filettati maschi manuali lineari, AISI 316

Swageless fine line threaded terminal AISI 316.

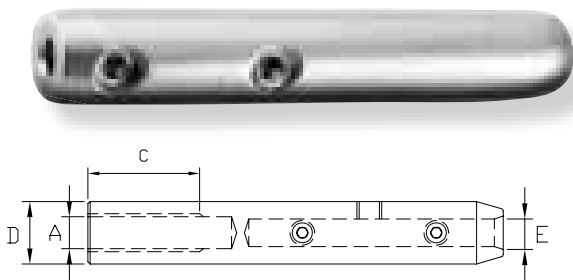


RIF. ART.	FUNE WIRE	FILETTO THREAD	C THREAD	D EXTERNAL	L LENGTH
2573	3	M6	50	10	80
2574	4	M6	50	10	80
2575	5	M8	60	13	98
2576	6	M8	60	13	98

Validi solamente per fune tipo 7 X 7 e 7 X 19 !
Only valid for wire rope constr. 7 X 7 e 7 X 19 !

Terminali filettati femmina manuali con grani

Inside thread manual terminal with screw.

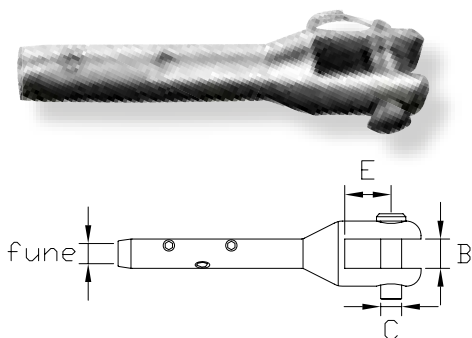


RIF. ART.	FUNE WIRE	A THREAD	C THREAD HOLE	D DIAM	E WIRE
7254-DX	3/4	M6	30	12	40
7254-05DX	5	M6	30	12	40
7255-DX	5	M8	40	14	50
7256-DX	6	M8	40	14	50

Validi solamente per fune tipo 7 X 7 e 7 X 19 !
Only valid for wire rope constr. 7 X 7 e 7 X 19 !

Terminale a forcella fresata manuale con grani, AISI 316

Fork terminal swageless with screw, AISI 316

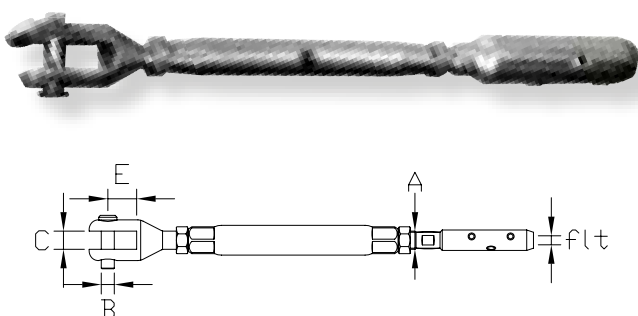


RIF. ART.	FUNE WIRE	GRD SIZE	B	C	E
7264-03	Ø 3	3	6	5	10
7264-04	Ø 4	3	6	5	10
7264-05	Ø 5	3	6	5	10
7264-06	Ø 6	3	6	5	10

Validi solamente per fune tipo 7 X 7 e 7 X 19 !
Only valid for wire rope constr. 7 X 7 e 7 X 19 !

Tenditore forcella fresata/manuale con grani, ribassato, AISI 316

Turnbuckles fork/swageless with screw, small type, AISI 316.

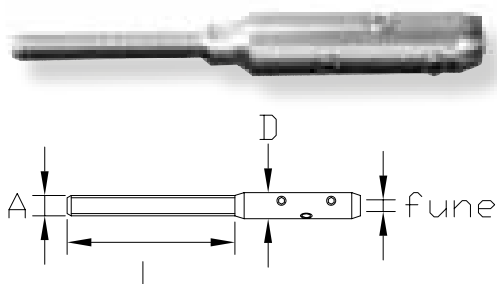


RIF. ART.	FUNE WIRE	A THREAD	B PIN	C WIDTH	E DEPTH
7091-03	3	M6	5	6	10
7091-04	4	M6	5	6	10
7091-05	5	M6	5	6	10
7091-06	6	M6	5	6	10

Validi solamente per fune tipo 7 X 7 e 7 X 19 !
Only valid for wire rope constr. 7 X 7 e 7 X 19 !

Terminale filettato maschio manuale con grani, AISI 316.

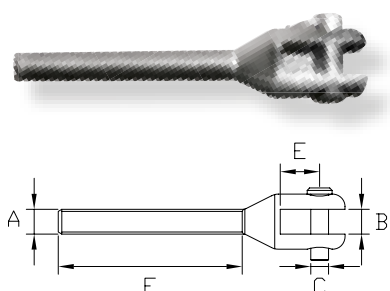
Swageless thread terminal with screw, AISI 316.



RIF. ART.	FILETTO THREAD	FUNE WIRE	D DIA.	L THREAD
7243	M6 DX	Ø 3	12	40
7244	M6 DX	Ø 4	12	40
7245	M8 DX	Ø 5	14	50
7246	M8 DX	Ø 6	14	50

Tirante a forcella fresata con gambo filettato, AISI 316

Threaded fork for turnbuckle, AISI 316.



ART. DESTRA RIGHT	ART. SINISTRA LEFT	A THREAD	B WIDTH	C PIN	E DEPTH	F LENGTH
7855-DX	7855-SX	M5	5	4	8	30
7856-DX	7856-SX	M6	6	5	10	40
7858-DX	7858-SX	M8	8	6	12	48
7860-DX	7860-SX	M10	8	8	14	55
7862-DX	7862-SX	M12	10	10	18	65

Tirante ad occhio filettato, AISI 316

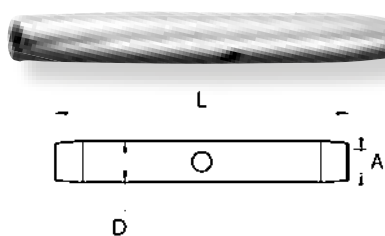
Eye thread stud, AISI 316.



ART. DESTRA RIGHT	ART. SINISTRA LEFT	A THREAD	B HOLE	C THICK	F LENGTH
7891-DX	7891-SX	M5	5	4	30
7892-SHDX	7892-SHSX	M6	5,5	4	16
7892-DX	7892-SX	M6	5,5	4	35
7893-DX	7893-SX	M8	6,5	5	45
7894-DX	7894-SX	M10	8,5	7	54
7895-DX	7895-SX	M12	10,5	9	64

Canaula conica tipo economico

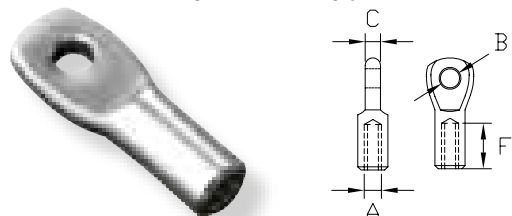
Conical body economic type



RIF. ART.	A	L	D
7065 - EC	M5	80	8
7066 - EC	M6	95	10
7068 - EC	M8	105	14
7070 - EC	M10	125	17

Occhio filettato internamente, tipo corto, AISI 316

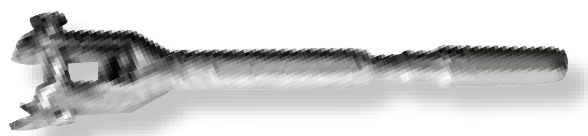
Inside threaded eye, short type, AISI 316



RIF. ART.	A THREAD	B D. HOLE	C THICK	F L. THREAD	GRD. SIZE
7881	M5	4,5	4	8	2,5
7882	M6	5,5	4,5	11	3
7883	M8	6,5	5	13	4
7884	M10	8,5	7	16	5

Tenditore a forcella girevole, ribassato, AISI 316 (non è compreso il terminale)

Swivel Turnbuckle, AISI 316 (terminal is not included)



RIF. ART.	FUNE WIRE	A FLT.	B WIDHT	C PIN	E DEPTH
7514	4	M6	7	6	13
7516	5	M6	7	6	13
7518	6	M6	7	6	13

TENDITORI "MONOREGOLAZIONE", RIBASSATI, COMPLETI DI CILINDRETTO INTERNO DA PRESSARE, AISI 316.

"MONO ADJUSTMENT" TURNBUCKLES, INCLUDED THE INSIDE STOP CYLINDER TO BE SWAGED, AISI 316.

"Mono" tipo a forcella

Fork Type "mono"



FORCELLA FORK	FUNE WIRE	GRD. SIZE	PERNO PIN	APERTURA WIDTH	PROFITA DEPTH	PRESSARE SWAGE
7524	3	3	5	6	11	6,0 / 6,3
7526	4	3	5	6	11	6,0 / 6,3
7528	5	3 - 4	5	6	11	7,5

"Mono" tipo a sfera

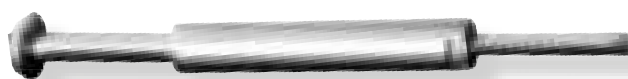
Ball Type "mono"



SFERA BALL	FUNE WIRE	GRD. SIZE	d.SFERA d.BALL	d.CORPO d.BODY	L.CORPO L.BODY	PRESSARE SWAGE
7534	3	3	15	10	55	6,0 / 6,3
7536	4	3	15	10	55	6,0 / 6,3
7538	5	4	20	12	65	7,5

"Mono" tipo a testa battente

Dome head type "mono"



TESTA BATTENTE DOME HEAD	FUNE WIRE	GRD. SIZE	d.TESTA d.HEAD	d.CORPO d.BODY	L.CORPO L.BODY	PRESSARE SWAGE
7544	3	3	12	10	55	6,0 / 6,3
7546	4	3	12	10	55	6,0 / 6,3
7548	5	4	14	12	65	7,5

La caratteristica dei tenditori "MONO", è quella che la filettatura rimane sempre nascosta, mai a vista.

The characteristic of turnbuckles "MONO", is what the thread is always hidden, never visible.

Asta filettata destra con vite a legno/tasselli

Dowel screw with right thread, A4.



RIF. ART.	FILETTO THREAD	L LENGTH	F THREAD	D DOWEL
7961	M5	80	32	40
7963	M6	90	35	50
7965	M8	130	55	65
7967	M10	150	55	75

Asta filettata doppia destra/sinistra, inox

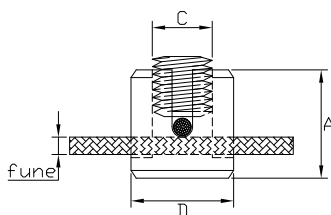
S.S. double threaded stud, right/left.



RIF. ART.	FILETTO THREAD	L LENGTH	F THREAD
7970	M5	65	30
7972	M6	65	30
7974	M8	65	30
7976	M10	85	40

Cilindro di fermo per incrocio funi, in acciaio inox.

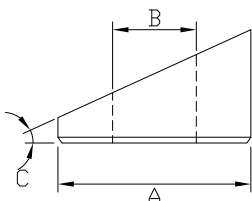
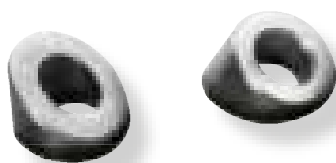
S.S. cross clip with screw



RIF. ART.	FUNE WIRE	D DIAM	A HIGH	C THREAD
7443	3	17	19	M10
7444	4	20	21	M12
7445	5	20	23	M12
7446	6	20	25	M12

Rondella inclinata a 30°, in acciaio inox, per scale con inclinazione di circa 30°

Angular washer 30° on S.S.

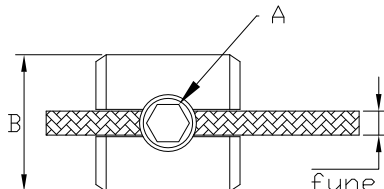


ART.PIATTO PLANE	ART.TUBO TUBE	FILETTO THREAD	A EXT	B HOLE	C DEGREE
7301	7301-RD	M6	14	6,5	30°
7302	7302-RD	M8	16	8,5	30°
7303	7303-RD	M10	22	10,5	30°
7304	7304-RD	M12	25	12,5	30°

I gradi di inclinazione "C" corrispondono al grado di inclinazione della scala.

Cilindri di fermo ad un grano, in acciaio inox

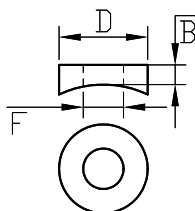
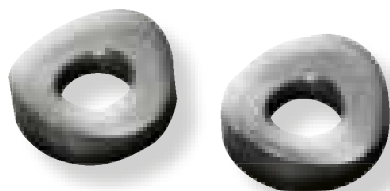
S.S. stopper on wire rope.



RIF. ART.	FUNE WIRE	A THREAD	B DIAM	C HIGH
7431	1-2	M4	10	8
7432	3-4	M8	15	12
7433	5-6	M10	20	15
7434	8	M12	24	18

Rondella di appoggio su tubo, in acciaio inox

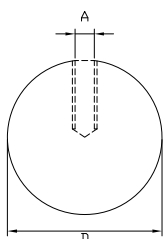
Round washer for pipe, on S.S.



RIF. ART.	FILETTO THREAD	TUBO PIPE	B	D
7316-06	M6	42,4	4	14
7318-08	M8	42,4	4,5	16
7318-10	M10	42,4	5	22
7319-12	M12	42,4	5,5	25

Sfera filettata internamente, inox, tipo lucido o satinato

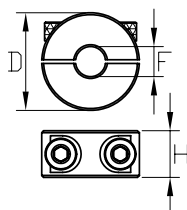
S.S. ball dome cap nuts



RIF. ART.	FILETTO THREAD	D DIAM
7991	M6	15
7992	M6	20
7993	M6	25
7995	M8	40

Rondelle di fermo su fune in acciaio inox

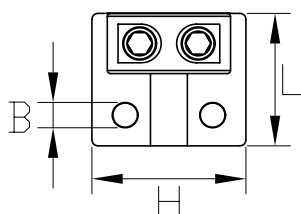
Wire rope clamp ring, on S.S.



RIF. ART.	FUNE WIRE	D	H
7437	Ø 3	16	10
7438	Ø 4	16	10
7439	Ø 5	20	10
7440	Ø 6	20	10

Piastrina di fermo per fissaggio a strutture in acciaio inox

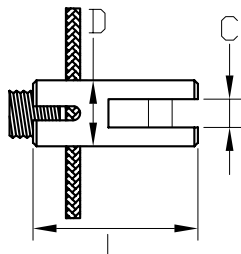
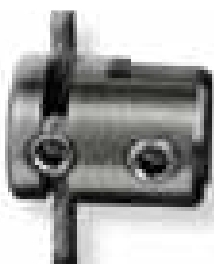
Stopper plate to connect frame with wire rope, on S.S.



RIF. ART.	FUNE WIRE	B THREAD	H LARGE	L LENGHT
7763	Ø 3	M5	25	20
7764	Ø 4	M5	25	20
7765	Ø 5	M5	25	20
7766	Ø 6	M5	25	20

Cilindro ferma fune per fissaggio piani in acciaio inox

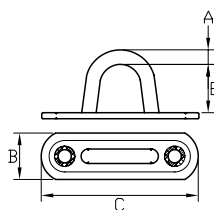
Stopper fork to connect frame with wire rope, on S.S.



RIF. ART.	FUNE WIRE	PANNELLO PANEL	C	D	L
7332-HO	Ø 3	ORRIZONTALE HORIZONTAL	6	14	35
7332-VE	Ø 3	VERTICALE VERTICAL	6	14	35

Cavallotto con piastrina in acciaio inox

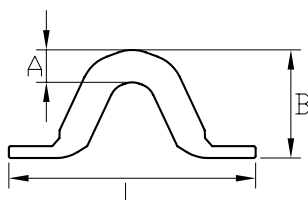
Pad eye base, on S.S.



RIF. ART.	A	B	C	E
7745	5	15	45	12
7746	6	20	60	19
7748	8	25	80	24

Cavallotto semplice in acciaio inox

Wire pad eye, on S.S.



RIF. ART.	A	B	L
7755	5	18	50
7756	6	22	60
7758	8	24	65

Distanziatore a parete per rampicanti

Spacer socket for crossing cables



ART.	FUNE	TIPO	ASTA	ALTEZZA FUNE	FLT BASE	GHIERA	TOT.
8540-78	4	A	dia. 16	78	M8	M16 x 40	95
8560-70	4	B	dia. 16	78	M8	M16 x 40	70
8548-78	4	C	dia. 12	78	M8	dado M12	85

Cilindro di incrocio funi, ad angolo variabile

Cross clamp for cables with variable degrees



ART.	TIPO	FUNE	FLT	D	A	C
7474	A	d. 4	//	20	21	M12
7475	A	d. 5	//	20	23	M12
7476	A	d. 6	//	20	25	M12
7474-FLT	FLT	d. 4	M8	20	31	M12
7475-FLT	FLT	d. 5	M8	20	33	M12
7476-FLT	FLT	d. 6	M8	20	35	M12

Terminale e tirante filettato snodato per legno/muro

Toggle terminal and threaded stud for wood/wall



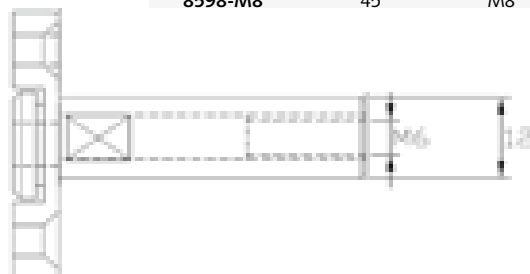
ART.	TIPO	FUNE	FLT	D	HOLE	THREAD
7481-0307	A	d. 3	//	6	30	//
7481-0407	A	d. 4	//	6	30	//
7481-M6SX	B	//	M6	SX	//	45

Tenditore a bicchierino girevole filettatura interna M6

Revolving turnbuckle socket with inside thread M6 right



ART.	DIA. BASE	FLT	L
8596-M6	40	M6	45
8598-M8	45	M8	52



Terminali manuali tipo "MINI" filettati femmina

"MINI" swageless terminal with inside thread



ART.	FUNE	FLT	D	L
7280	d. 3	M6 x 18	12	55
7282	d. 4	M6 x 18	12	55
7283	d. 5	M6 x 20	15	60
7285	d. 5	M8 x 20	15	60
7287	d. 6	M8 x 20	15	60

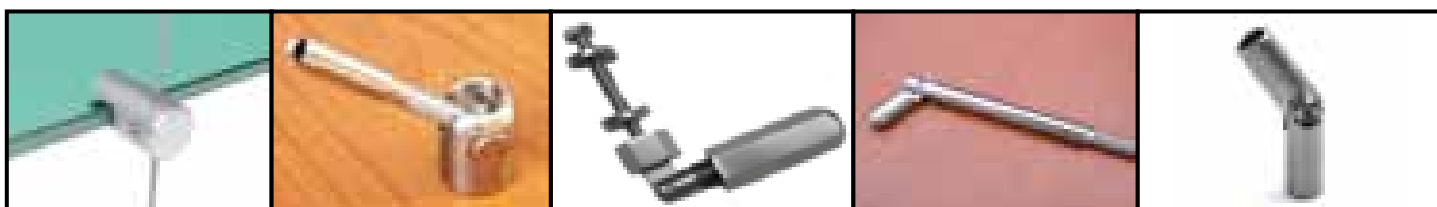


Terminali manuali tipo "MINI" filettati femmina

"MINI" swageless terminal with inside thread

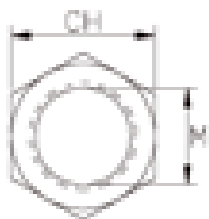


ART.	FUNE	FLT	D	L
7290	d. 3	M6 x 50	12	55
7292	d. 4	M6 x 50	12	55
7293	d. 5	M6 x 50	15	60
7295	d. 5	M8 x 60	15	60
7297	d. 6	M8 x 60	15	60



**Dadi medi DIN 934,
AISI 316**

*Standard NUT
DIN 934, AISI 316*



RIF. ART.	M	CH
8655	M5	8
8656	M6	10
8658	M8	13
8660	M10	17
8662	M12	19
8664	M14	22
8665	M16	24
8668	M18	27
8670	M20	30
8672	M22	32
8674	M24	36

**Barra filettata "MA"
destra, AISI 316**

*Threaded rod "MA"
right, AISI 316*



RIF. ART.	M	L
8776	M6	1000
8778	M8	1000
8780	M10	1000
8782	M12	1000
8784	M14	1000
8786	M16	1000
8788	M18	1000
8790	M20	1000

Grani inox, DIN 914

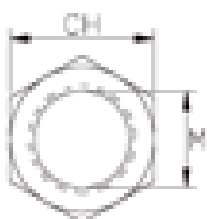
*Hex socket set screw DIN
914, S.S.*



RIF. ART.	M	L
8724	M4	5
8726	M5	5
8728	M6	6
8730	M8	8
8731	M10	10

**Dadi "ribassati" dx e sx
AISI 316**

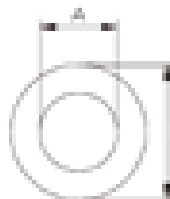
*Small type nut Right /
Left, AISI 316*



RIF. ART.	M	CH
8631	M6	10
8632	M8	13
8633	M10	17
8634	M12	19
8635	M14	22
8636	M16	24
8637	M18	27
8639	M20	30
8640	M22	32
8641	M24	36

**Rondelle piane inox, DIN
125 - Plain**

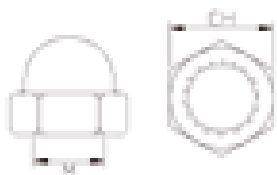
washers, DIN 125, S.S.



RIF. ART.	A	D
8736	M6	12,5
8738	M8	17
8740	M10	21
8742	M12	24
8744	M14	28
8746	M16	30
8750	M20	37

**Dadi "ciechi" inox DIN
1587 - Domed cap nuts**

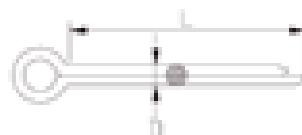
DIN 1587, S.S.



RIF. ART.	M	CH
8686	M6	10
8688	M8	13
8690	M10	17
8692	M12	19
8694	M14	22
8696	M16	24

Copiglie inox, DIN 94

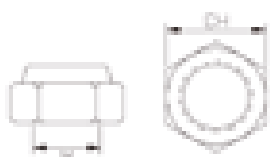
S.S. split pins, DIN 94



RIF. ART.	D	L
8801	2	15
8803	2,5	25
8805	3	30
8807	4	40
8809	5	50
8811	6	60
8813	8	80

**Dadi autobloccanti DIN
985, inox - Selflocking
nut DIN 985, inox**

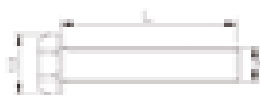
nut DIN 985, inox



RIF. ART.	M	CH
8706	M6	10
8708	M8	13
8710	M10	17
8712	M12	19
8714	M14	22
8716	M16	24

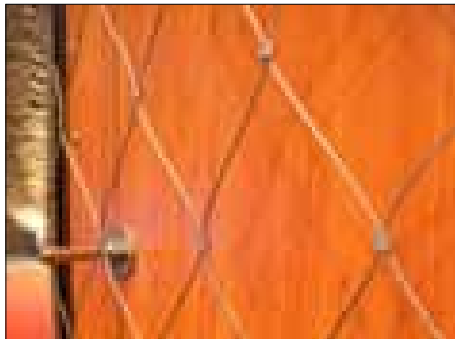
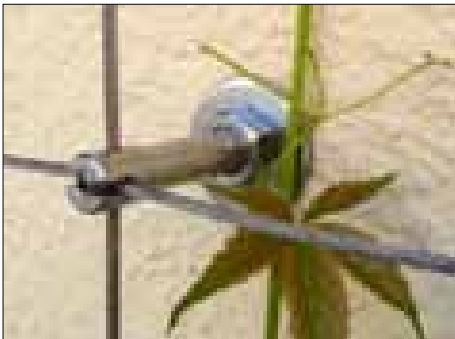
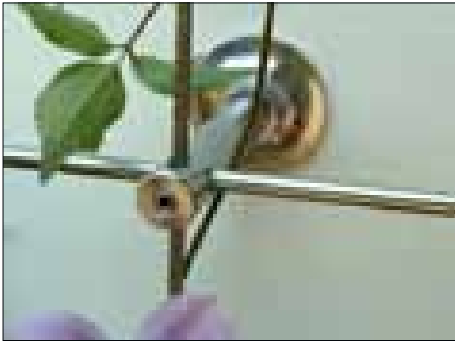
**Viti a testa bombata
esagono incassato, inox**

*Hex socket button
head screw - UNI 7380*



RIF. ART.	M	D	L
8892	M5	9,5	40
8893	M6	10,5	50
8894	M8	14	60
8895	M10	17,5	60

Tutte le dimensioni degli articoli presenti possono subire variazioni in qualunque momento e senza alcun preavviso.
We reserve to ourselves to change the dimensions at any moment and without warning.





Via alle Vecchie Fornaci, 8 - 16154 Genova Italy
www.garelli-inox.it - www.garelli-inox.com
info@garelli-inox.it
Tel +39 010 6501978